



Add-On Products

Digital Sign Service

Server Installation Guide

For DSS 4.2

Version: 01

Add-On Products
Roms Hule 8 – 7100 Vejle – Denmark
Phone: +45 7944 7000 Fax: +45 7944 7001

Mail: info@add-on.com
Internet: www.add-on.com



No parts of this publication may be reproduced in any form or by any means or used to make any derivative such as translation, transformation, or adaptation without the permission from Add-On Products.

Table of contents

Table of contents	2
CHAPTER 1.....	3
Introduction	3
Terminology List	4
Digital Sign Service Overview	4
CHAPTER 2.....	7
Installation.....	7
Install Digital Sign Service.....	7
Remove Digital Sign Service.....	12

CHAPTER 1.

Introduction

This Installation Guide is intended for IT Specialist and describes how to install Digital Sign Service system.

The document consists of the following chapters:

- [Introduction](#) chapter gives you the structure of the document as well as an overview of the Digital Sign Service software.
- [Installation](#) chapter provide you steps that you need to follow in order to install the DSS software.

In this chapter:

- Definitions, Acronyms and Abbreviations
- Digital Sign Service Overview

Terminology List

Term	Definition
AD (Active Directory)	Service that provides the means to manage the identities and relationships that make up network environments.
Destination store	The place to where Digital Sign Service puts the xml file extracted from Exchange Server. In this version of Digital Sign Service, Destination Store is Ftp Server, file server or ISS
Digital Sign Service (DSS)	Digital Sign Service is a software designed to collect data from Exchange Server and store it in a specific location as well as update data on Exchange Server when receiving request.
Exchange Connector	The system which can use the xml output from DSS. Digital signs assigned to those systems read the content of the XML files. In this case appointment content for multiple calendar accounts are stored in one XML
Group or distribution list	List of users joined together as one entity. Created in AD or on Exchange Server.
IIS (Internet Information Service)	A Web server with integrated, reliable, scalable, secure, and manageable capabilities available over an intranet, the Internet, or an extranet, and is a tool for creating a strong communications platform for dynamic network applications.
Microsoft .NET Framework	A set of Microsoft software technologies for connecting information, people, systems, and devices. It enables a high level of software integration through the use of Web services: small, discrete, building-block applications that connect to each other as well as to other, larger applications over the Internet.
Microsoft Exchange Server	Server software enabling you to send and receive electronic mail and other forms of interactive communication through computer networks.
UTC (Coordinated Universal Time)	Equivalent to mean solar time at the prime meridian, formerly expressed in GMT.

Digital Sign Service Overview

The two main purposes of Digital Sign Service are:

- To extract appointment information from assigned MS Exchange calendar accounts and place this information in standard XML files, so they can be used for further processing by digital signage.
- To collect user input from digital signs. Based on this input, DSS can modify the content of assigned MS Exchange calendar accounts.

The basic DSS components are as follows:

- **Digital Sign Service backend (DSS backend)** provides the options for saving the configuration of the connecting information, destination store, filtering output data and logging.
- **Digital Sign Windows Service** collects data from Exchange Server and stores it in a specified destination. The service functions in Loop- or interval-based which means that data will be synchronized from the Exchange server at specified intervals or whenever it is requested. Digital Sign Service can perform full synchronization: all data is replicated from the Exchange server and from Domain Controller (Active Directory).

- **Digital Sign REST Service** provides the ability for a **third-party program** to communicate with the Exchange Server in order to update data on the Exchange Server. The functionalities that the Web service provides are **End current meeting**; **Extend current meeting**; and **Book a new meeting**.

DSS synchronizes data from the Exchange server to two **destination stores**. Digital Sign Service **backend** provides the options for saving the configuration of those stores, including filtering and settings for private appointments. The destination stores are listed below:

- Exchange Connector
- Digital Sign

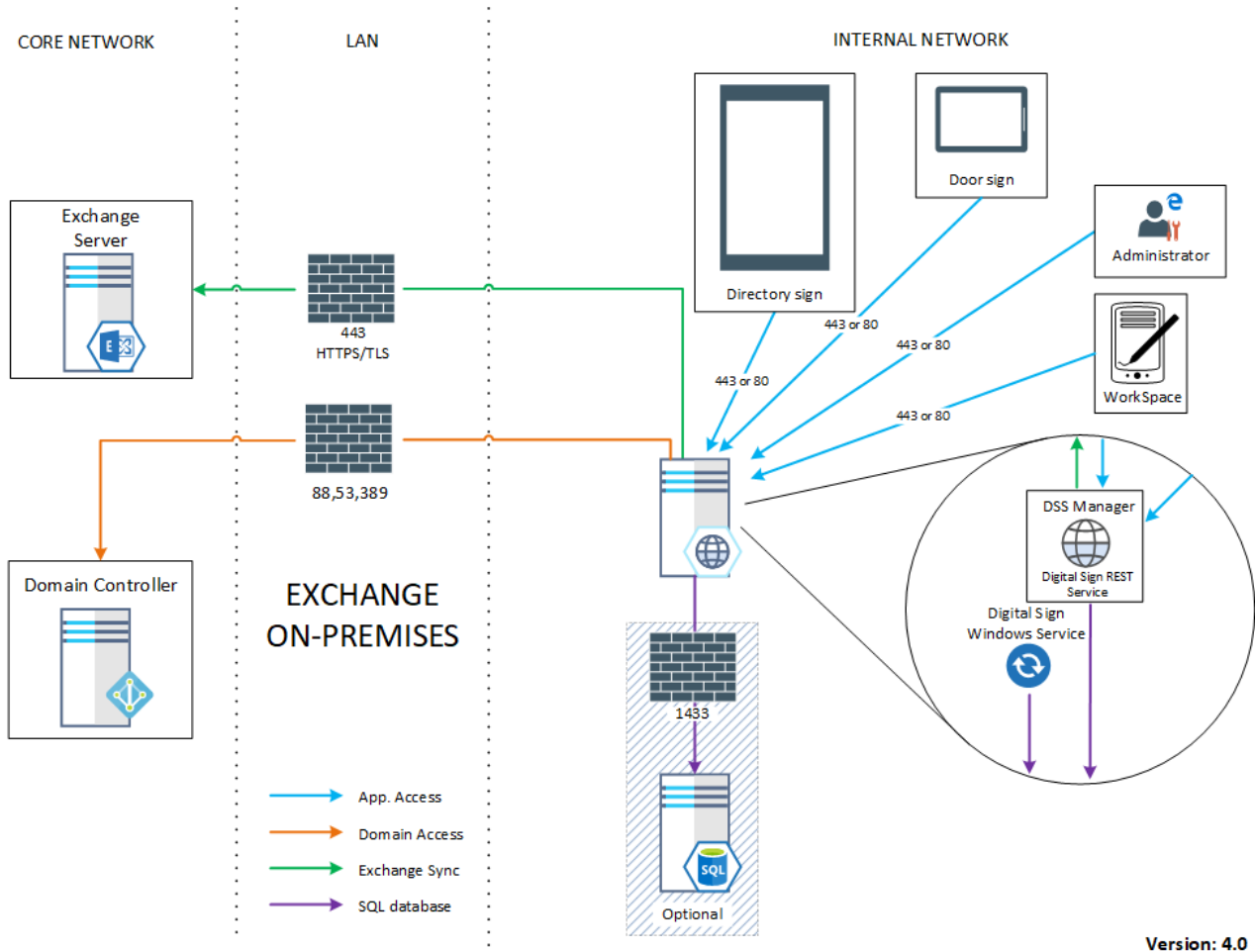


Figure 1. Digital Sign Service System – On Premises

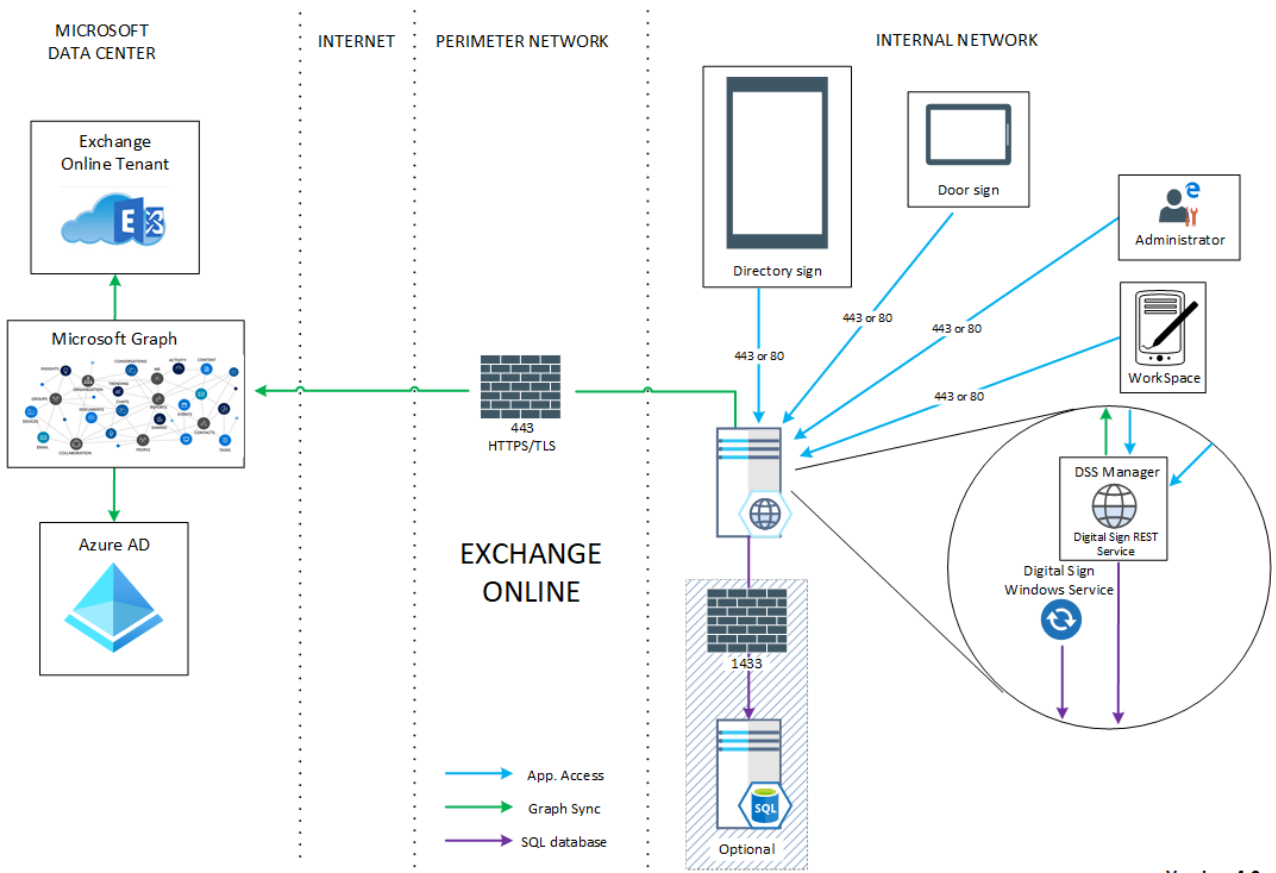


Figure 2. Digital Sign Service System – Azure

CHAPTER 2. Installation

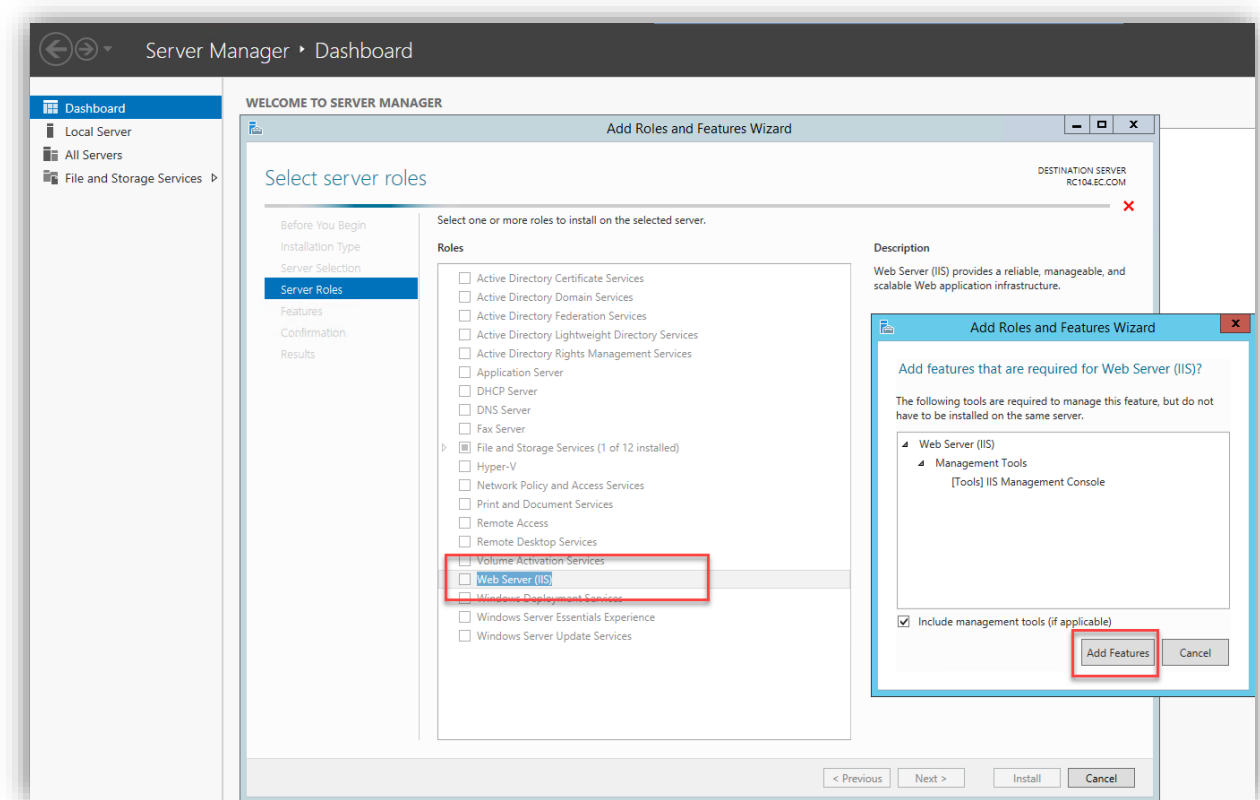
NOTE: For security purpose, we recommend using SSL when doing configuration for Digital Sign Service.

Install Digital Sign Service

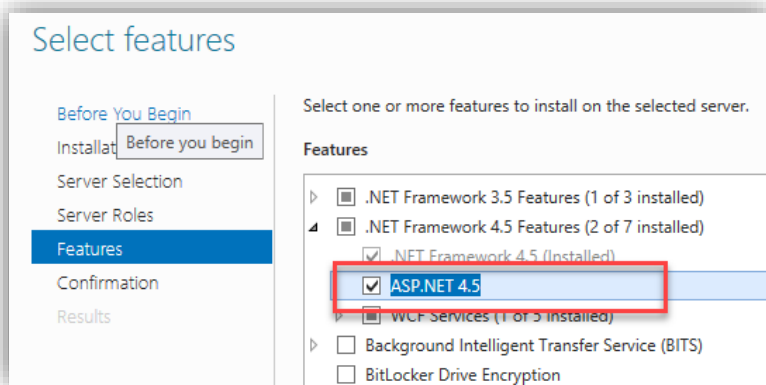
Prepare for installation

To prepare for installation of DSS for Server, please have a look at the following sections:

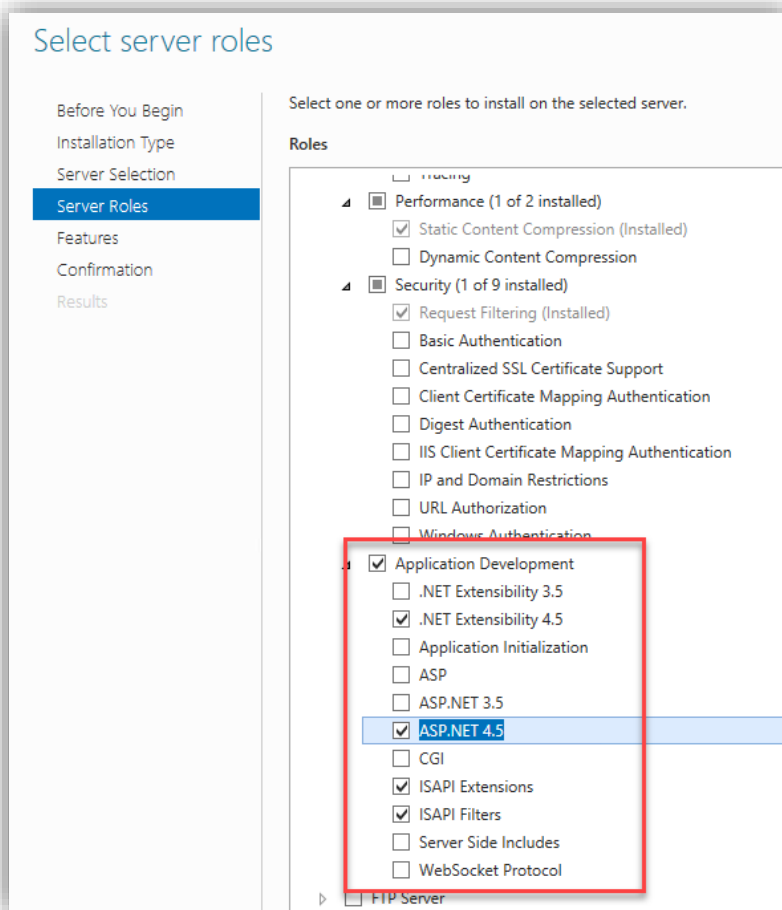
- Go to [System Requirements](#) page to know how to set up prerequisite software
- Install required IIS components, including:
 - Web Server (IIS)



- ASP.NET 4.5



- .NET Extensibility 4.5
- ISAPI Extensions
- ISAPI Filters



NOTE: If other IIS components are enabled, they do not need to be removed.

- Install .NET framework 4.8

Install Digital Sign Service

After you have launched the Digital Sign Service setup wizard, you will see the welcome screen as shown in the figure below:

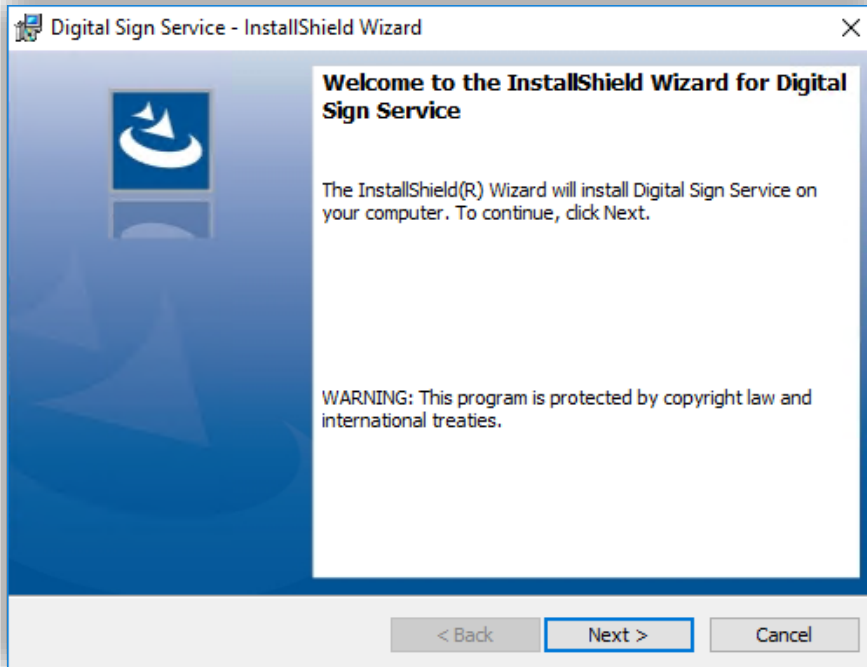


Figure 3. Digital Sign Service Installer Welcome page

Click **Next** to proceed with the installation.

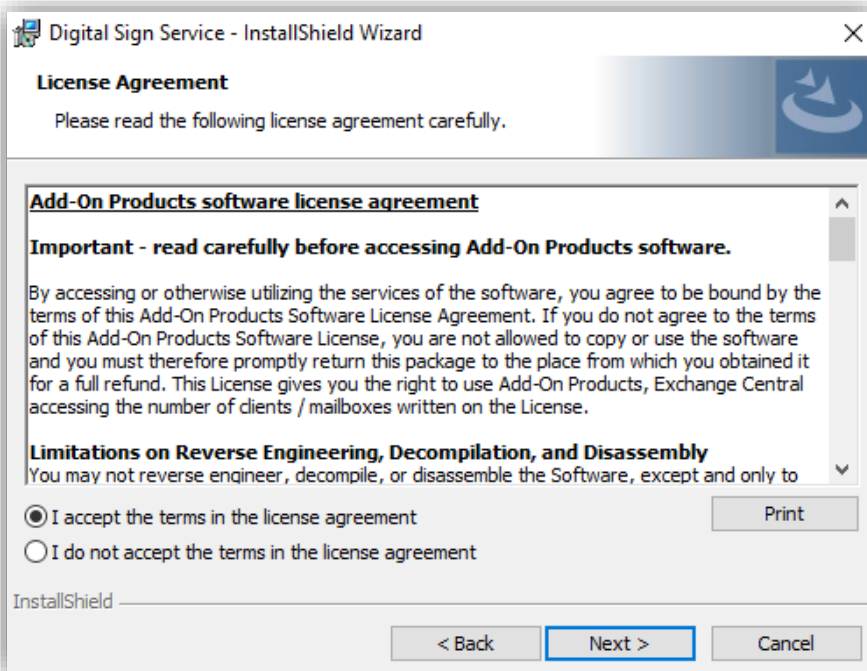


Figure 4. License Agreement

Select "I accept the terms in the license agreement" and click [Next].

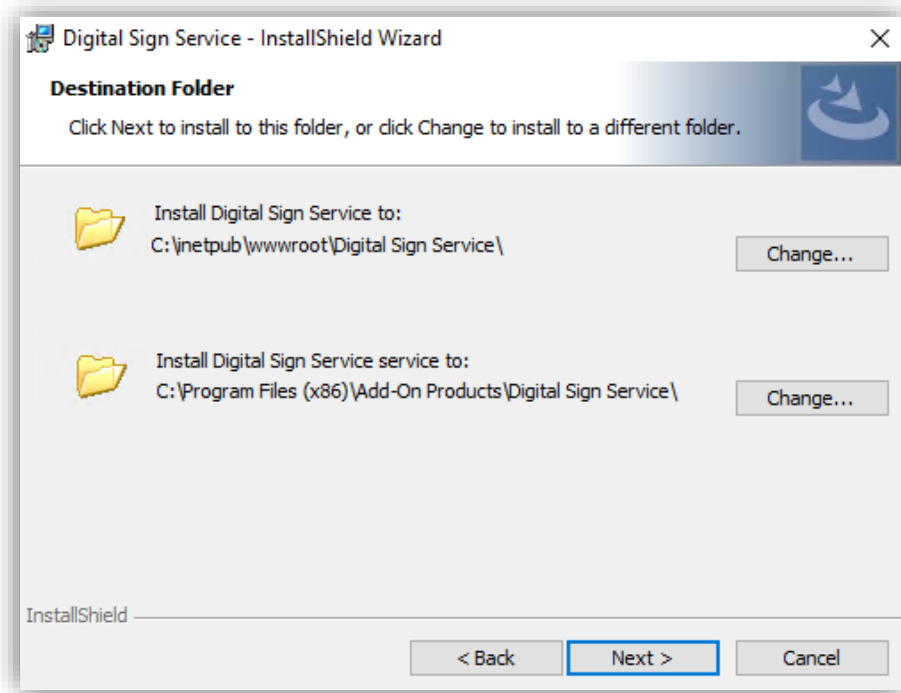


Figure 5. Destination Folder

Select destination folders for your installation, or you can use the default destination. Click **[Next]** to continue.

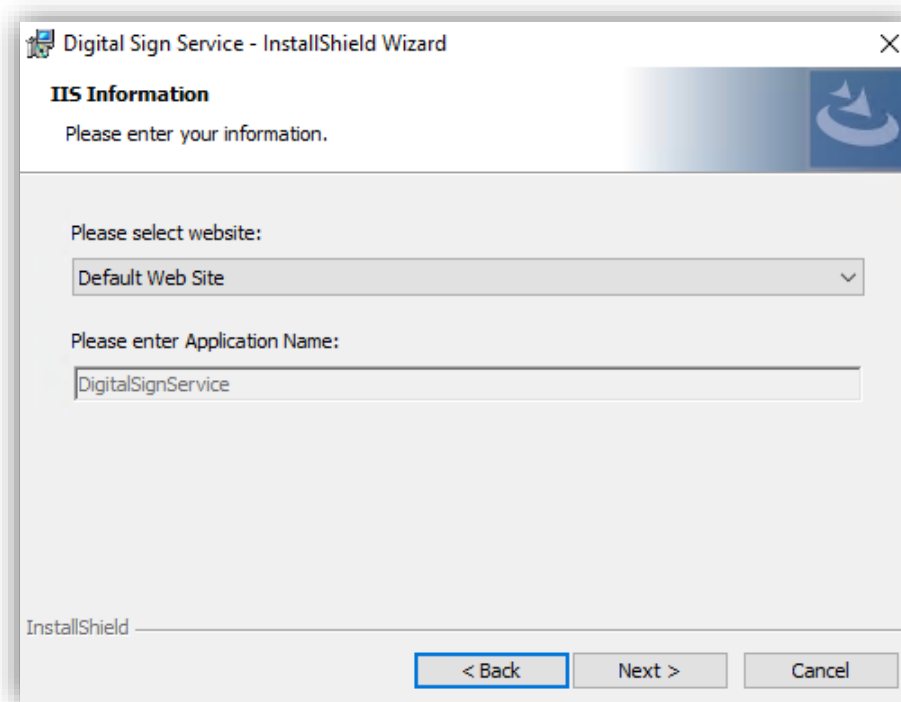


Figure 6. IIS Information

Select website and click **[Next]**.

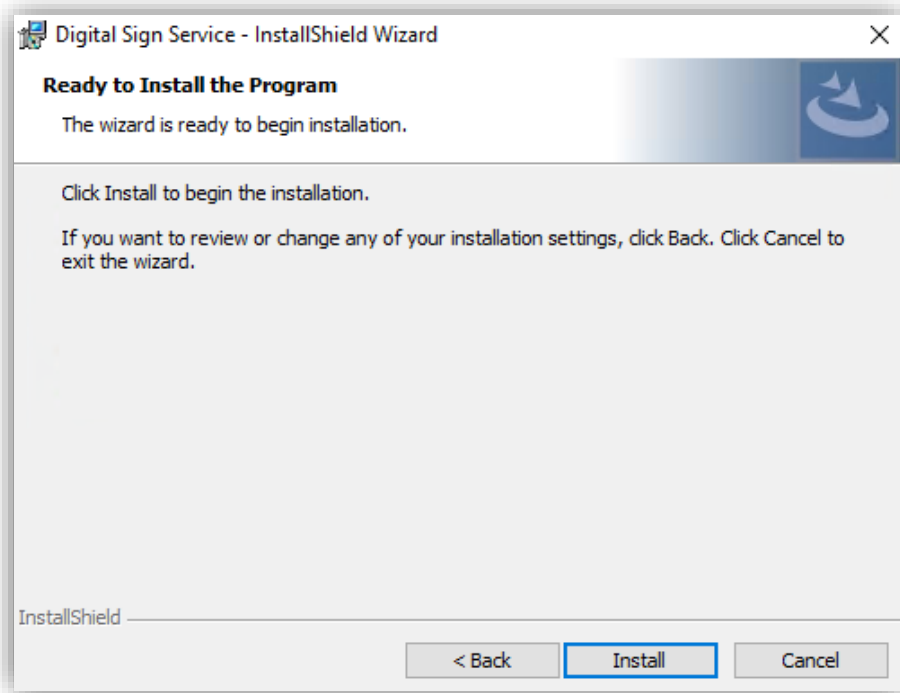


Figure 7. Begin installation

The setup wizard now reports that the installer is ready to install Digital Sign Service on your Computer. You can review the installation settings specified during the previous steps by clicking [**Back**]. If you are sure that everything has been specified correctly, click [**Install**] to begin the installation.

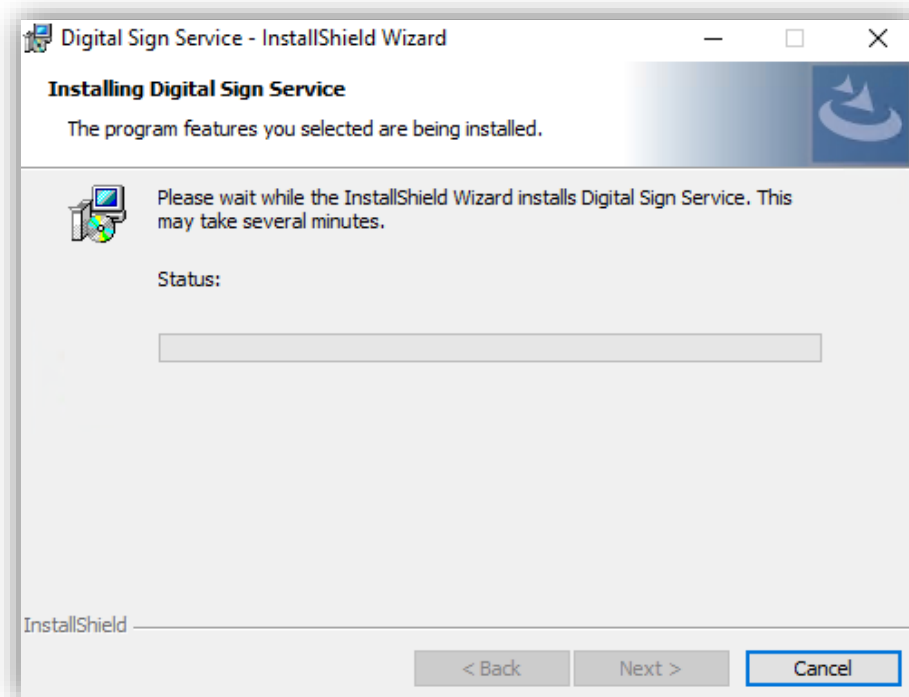


Figure 8. Installing Digital Sign Service

When the installation is complete, a screen will appear informing you about the result of that installation.

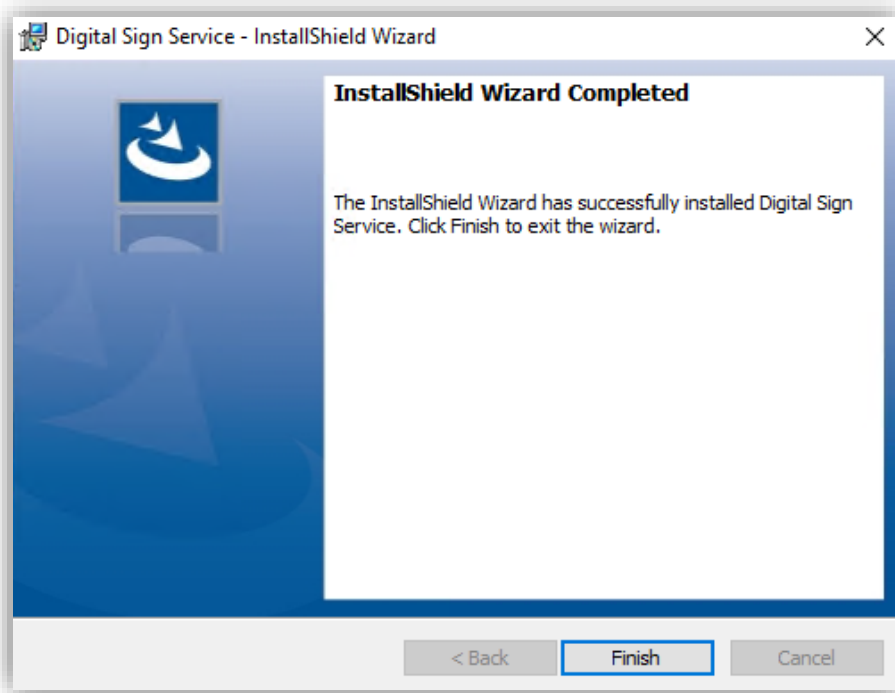


Figure 9. Installation completed

Click [**Finish**] to complete Digital Sign Service installation process.

After this, you can go to the link with the following format to begin using Digital Sign Service.

http://Servername/DigitalSignService (e.g. <http://AddOn.com/DigitalSignService>)

or *http://ServerIPaddress/DigitalSignService* (e.g. <http://213.128.1.157/DigitalSignService>)

Remove Digital Sign Service

You may want to remove all Digital Sign Service components from your computer, follow the steps below:

Uninstallation of DSS software

From the **Start** menu, select **Control Panel, Programs and Features**. The list of all programs installed on your computer will appear. It will look like on the figure below.

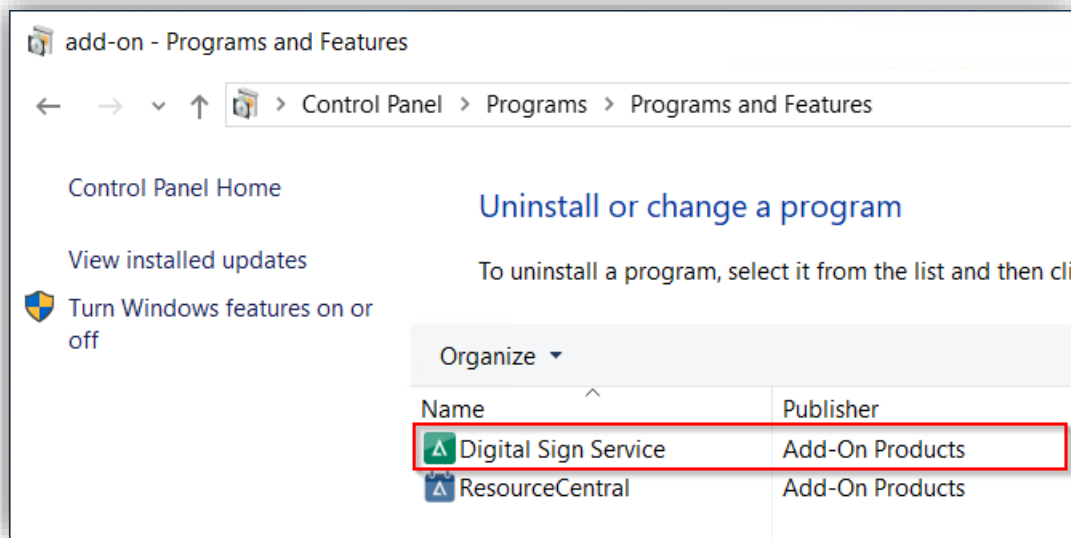


Figure 10. Add or Remove Programs window

Select the **Digital Sign Service** entry from the list and click **[Uninstall]**. Confirm your decision to remove Digital Sign Service from your computer.

Post-Removal Cleanup

In uninstallation process, DSS backend Setup Wizard removes all the installed components from your computer. However, it removes only the files and folders that were previously installed. Some of the files will not be removed. These are the newly created files in the folder to which DSS backend was installed. DSS backend installation folder is located at:

C:\inetpub\wwwroot\Digital Sign Service

You will need to manually remove these files and folders.

In particular, another DSS backend folder will also need to be removed. It is by default located at:

C:\ProgramData\Add-On Products\Digital Sign Service

You will need to remove the folder with the files inside.

NOTE

If you changed the names of the files or folders belonging to DSS backend, DSS Setup Wizard will not be able to remove them.

Give the renamed files and folders their original names before you begin removing Digital Sign Service or remove them manually.