



Add-On Products  
**Ariadne**

---

# Ariadne for Windows Client Administrator Guide

## **Version 1.11**

Add-On Products  
Roms Hule 8 – 7100 Vejle – Denmark  
Phone: +45 7944 7000 Fax: +45 7944 7001

Mail: [info@add-on.com](mailto:info@add-on.com)  
Internet: [www.add-on.com](http://www.add-on.com)



No parts of this publication may be reproduced in any form or by any means or used to make any derivative such as translation, transformation, or adaptation without the permission from Add-On Products.

# Table of contents

---

Table of contents .....	2
Introduction .....	4
Installer Log File .....	5
Client Log File .....	6
System Requirements .....	8
Hardware .....	8
Software .....	8
Configure a PC to be a sign.....	9



# Introduction

---

The Ariadne for Windows product is an extension to the core Ariadne3 software product developed by Add-On Products.

The Ariadne for Windows extends Ariadne3 with features, so Windows7 PCs can be connected to the Ariadne3 server software. When the PCs are connected they can be used to display schedule file's content as an Ariadne sign that we know from the Ariadne3 software platform.

This document provides a short guidelines for the administrator and consists of the following sections:

- Introduction (this section)
- Installer Log File
- Client Log File
- System Requirement
- Configure a PC to be a sign

## Installer Log File

---

During Ariadne for Windows installation, if the process successfully completes, no logs will be recorded. In case errors which are called custom actions occur, they will be logged into a file named AriadneHWIClient\_Install.log. This file is located in Ariadne for Windows installation folder, e.g.: **C:\Program Files\Add-On Products\Ariadne for Windows\AriadneHWIClient\_install.log**.

## Client Log File

The client log file is used to record Ariadne for Windows' activities. Up to configuration, Error, Warning, or Verbose is set.

**Error:** Displays only error log entries;

**Warning:** Displays warning and error log entries;

**Verbose:** Displays error, warning, and verbose log entries

To open the log file, in Ariadne Configuration dialog, click [**Open**] button in **Logging** field of **Options** tab.

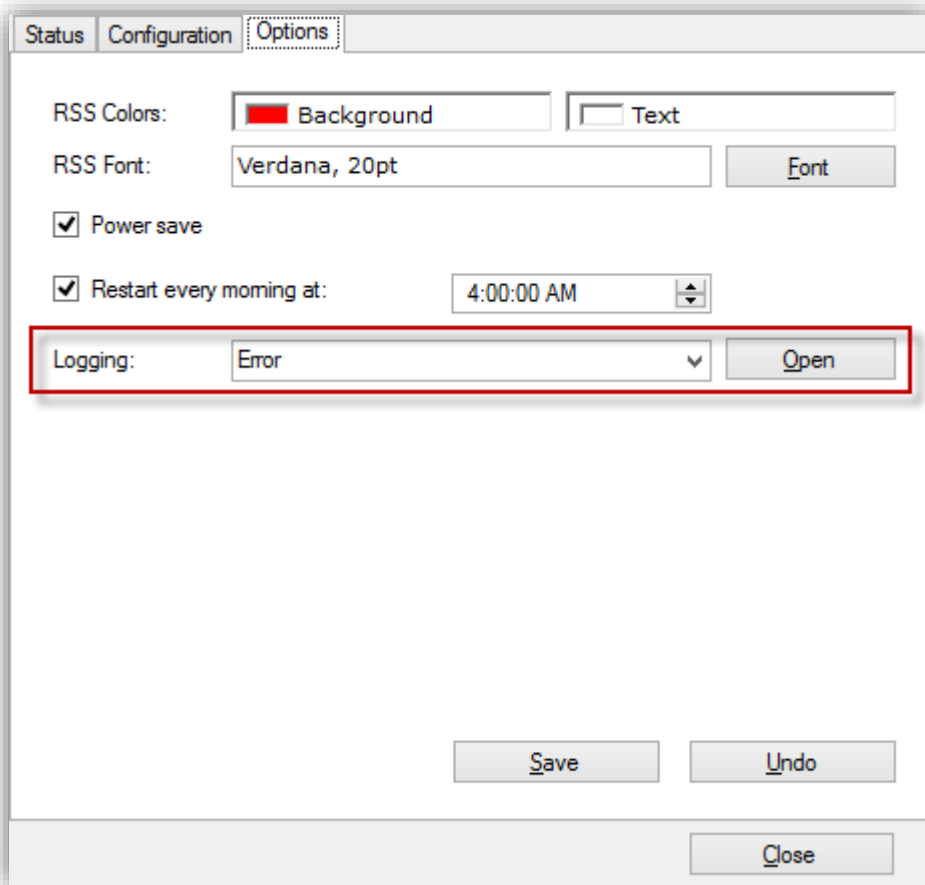


Figure 1. Logging Setting

OR access the folder: **C:\ProgramData\Add-On Products\Ariadne for Windows\Logging\AriadneforWindows**

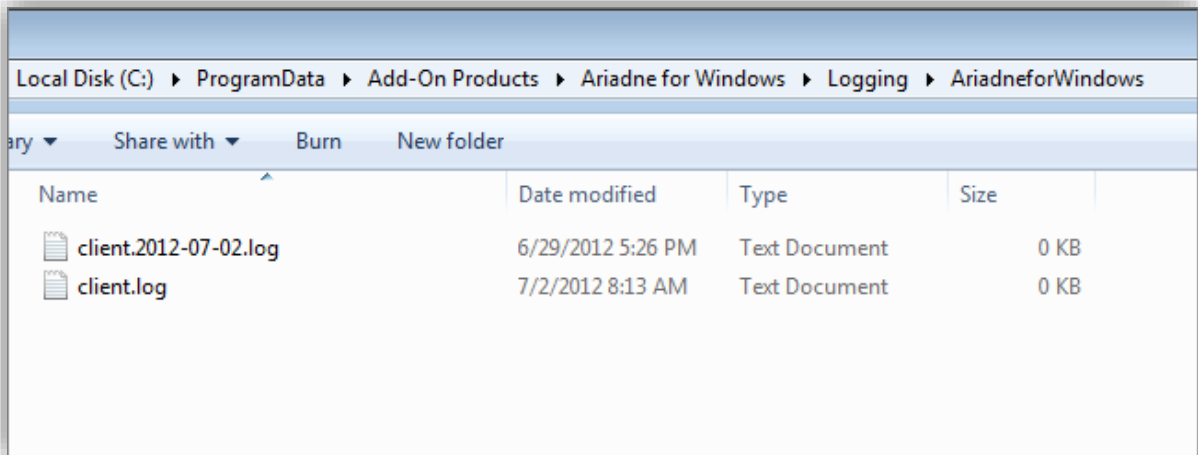


Figure 2. Log files

# System Requirements

---

## Hardware

In order for Ariadne for Windows sign works correctly, it is recommended with the following hardware:

- **Processor:** Intel® Pentium® Processor E2160 (1M Cache, 1.80 GHz, 800 MHz FSB) or equivalent (Recommended)
- **RAM:** 2 GB RAM
- **Hard Disk:** 1 GB or larger if there are many media files to be used.

## Software

- **Operating Systems:** Windows 10
- Microsoft .NET Framework 4.7.2
- **Ariande3**, version 3.10.8.4 or higher is installed and running in a server which can be connected to.
- **Ariadne Sign Server** is running in a server which can be connected to.



## Configure a PC to be a sign

---

To configure a PC to be a sign, first of all, Ariadne for Windows is required to install successfully then follow the steps which are addressed in ***Ariadne for Windows Guide***, ***Configure Server address*** and ***Configure Sign*** sections.