



Add-On Products
Ariadne

Ariadne for Windows Setup and Administrator Guide

Version 1.18

Add-On Products
Roms Hule 8 – 7100 Vejle – Denmark
Phone: +45 7944 7000 Fax: +45 7944 7001

Mail: info@add-on.com
Internet: www.add-on.com



No parts of this publication may be reproduced in any form or by any means or used to make any derivative such as translation, transformation, or adaptation without the permission from Add-On Products.

Table of contents

Table of contents	2
CHAPTER 1.	4
Introduction	4
Ariadne for Windows Overview	6
CHAPTER 2.	7
Install server side and client side Ariadne for Windows	7
Installation	7
Uninstallation	10
Ariadne Sign Service and Ariadne for Windows connection	11
Configuration dialog	14
CHAPTER 3.	19
Questions and Answers.....	19

CHAPTER 1.

Introduction

The Ariadne for Windows product is an extension to the core Ariadne3 software product developed by Add-On Products.

The Ariadne for Windows extends Ariadne3 with features, so Windows7 PCs can be connected to the Ariadne3 server software. When the PCs are connected they can be used to display schedule file's content as an Ariadne sign that we know from the Ariadne3 software platform.

This document provides a guide to setup and administrate the Ariadne server side and the Windows7 PC side (client side) so PCs can be used to display Ariadne content.

The document consists of the following chapters:

- Introduction (this section)
- Definitions, Acronyms and Abbreviations
- Install Server Side and Client side
- Server and Client's guide
- Q&A

Definitions, Acronyms and Abbreviations

Term	Definition
UI	User Interface
Customer	A customer who use Ariadne UI to book event. For example a hotel with a sign system installed.
Sign	A physical stand with a built in monitor and client system to interpret the instructions from the server part of the system and visually display the output for the Viewers. Ariadne for Windows Sign is a PC screen which can display media files such as image, flash, video, animation, RSS or playlist.

Table 1. Definitions, Acronyms and Abbreviations

Ariadne for Windows Overview

The Ariadne for Windows product is a server-client system which makes it possible to use a Window PC monitor as an alternative to a Modulex digital sign.

For Ariadne for Windows it is a prerequisite that the Ariadne 3 server side software is already installed. The reason for this is that the schedule file format, background processes and UI are re-used without changes.

A service will be established on the Ariadne server. This service will send schedule files on request to clients that connects to the server and the client (PC monitor) will display content.

The Ariadne for Windows components are as below:

- Virtual Sign (application on the PC)
- Ariadne Sign Service: Check new generated Schedule File and send new file to Virtual Sign on request.
- Ariadne Sign Service Controller: UI to operate the Ariadne Sign Service.

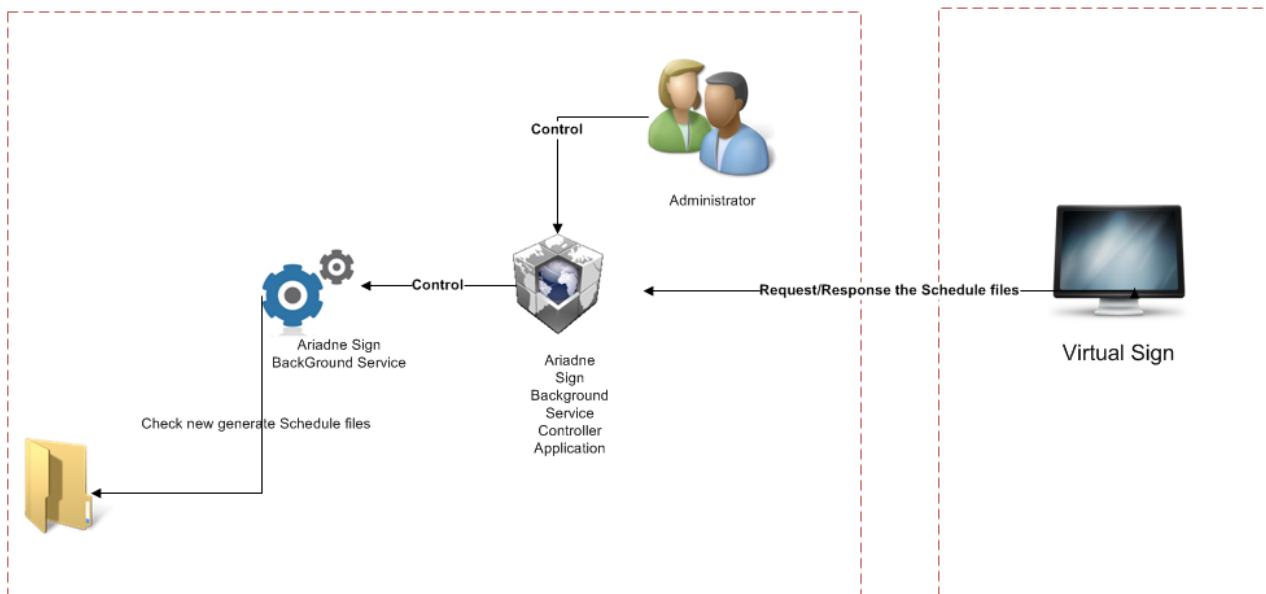


Figure 1. Ariadne for Windows Components

CHAPTER 2.

Install server side and client side Ariadne for Windows

Installation

Place the client side installer on the PC you want to use an Ariadne sign.

The launch the Ariadne for Windows client installer by double clicking the file named Ariadne for Windows.exe.

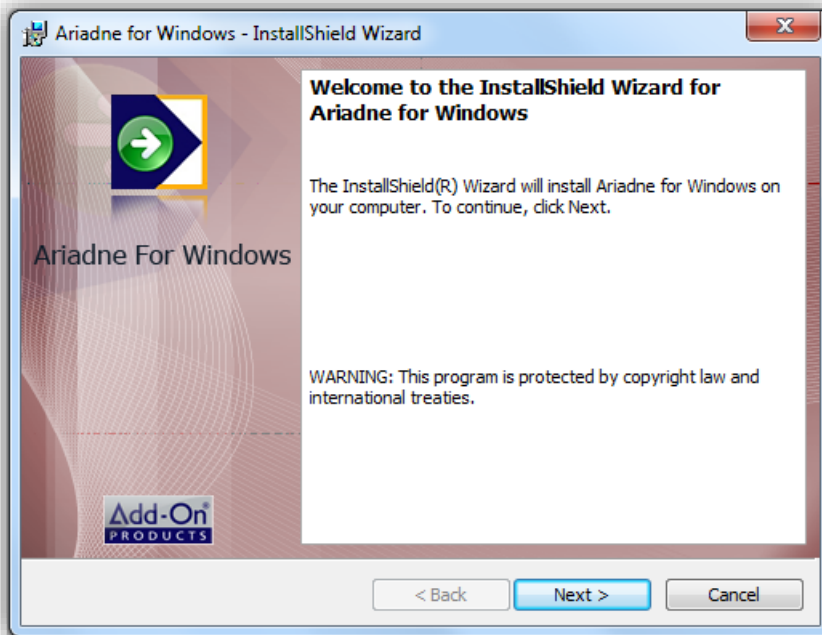


Figure 2. Welcome screen

Click [**Next**] to continue.

Let the destination folders as default or they can be customized by clicking [**Change**] and browse to other folders

Click [**Next**] to go to the next step:

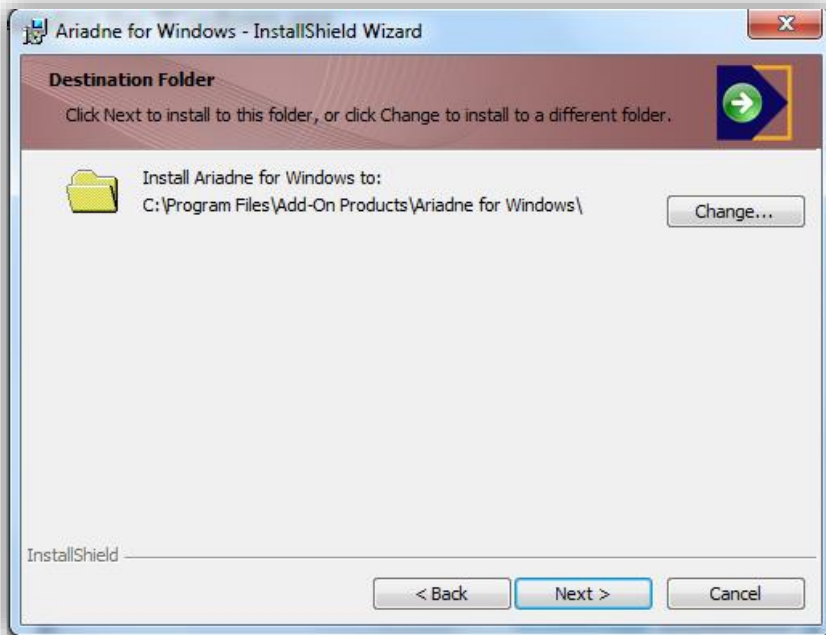


Figure 3. Destination folder

Click [**Install**] to begin the installation process.

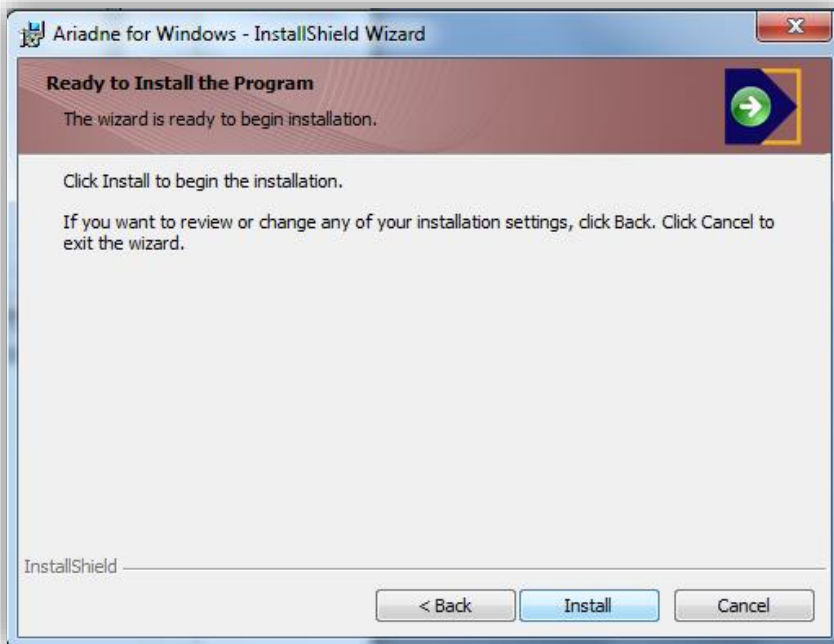


Figure 4. Ready to install

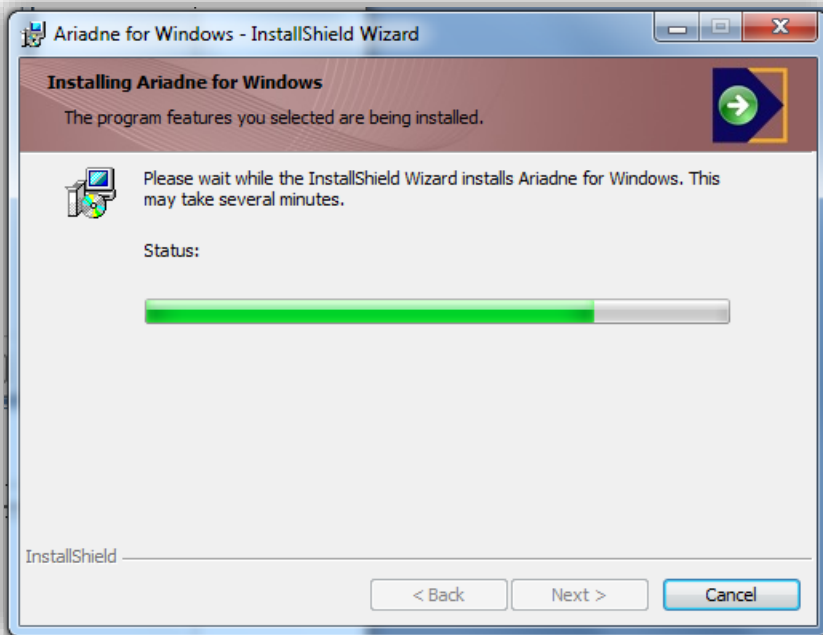


Figure 5. Installation progress

The Ariadne for Windows installation has now finished. Click **[Finish]** to close the installer.

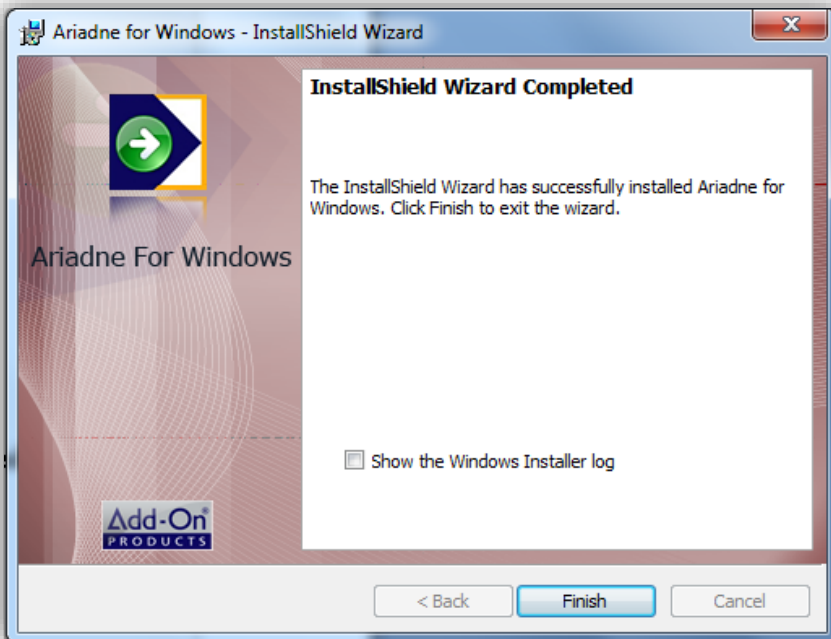


Figure 6. Complete installation

Uninstallation

Ariadne Sign Service

Access **Start → Programs and Features**, double click on **Ariadne Sign Service** and follow the steps to uninstall.

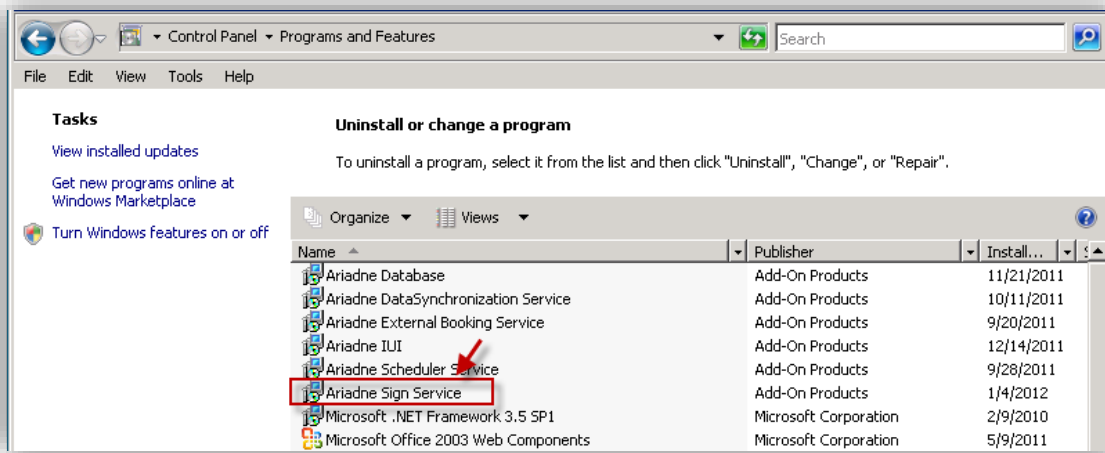


Figure 7. Uninstall Ariadne Sign Service

Ariadne for Windows

Access **Start → Programs and Features**

Double click on Ariadne for Windows and follow the steps to uninstall.

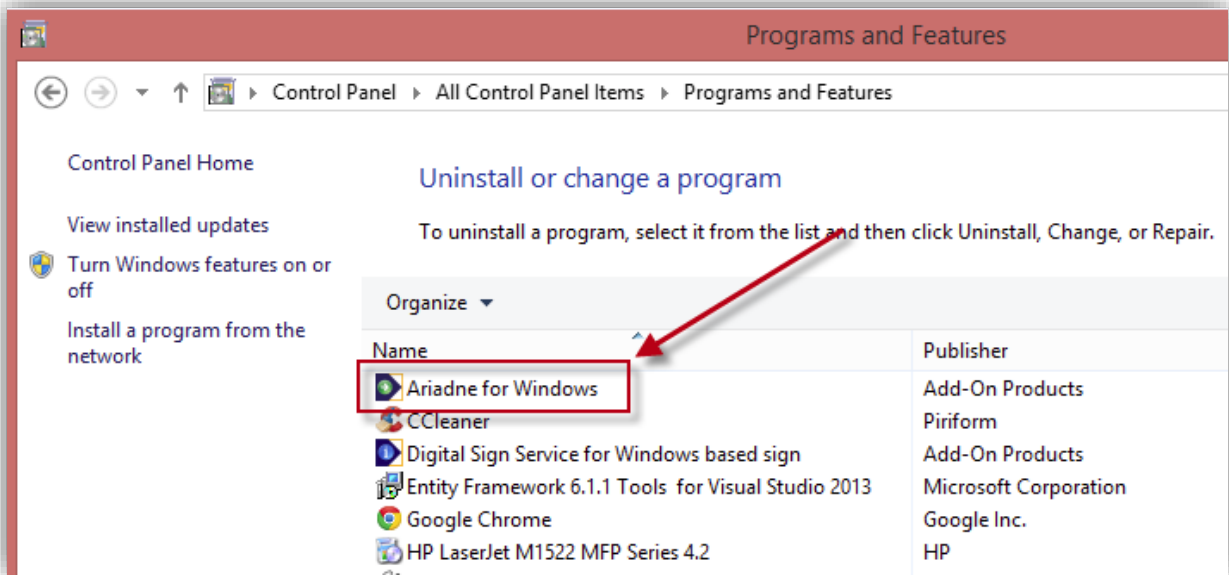


Figure 8. Uninstall Ariadne for Window

Ariadne Sign Service and Ariadne for Windows connection

To establish the connection between Server and Client, do the following steps:

Ariadne Sign Service Controller

Start Ariadne Sign Service in the server side by clicking the **[Start]** button if the service is not started.

Click **[Stop]** button if you want to stop service.

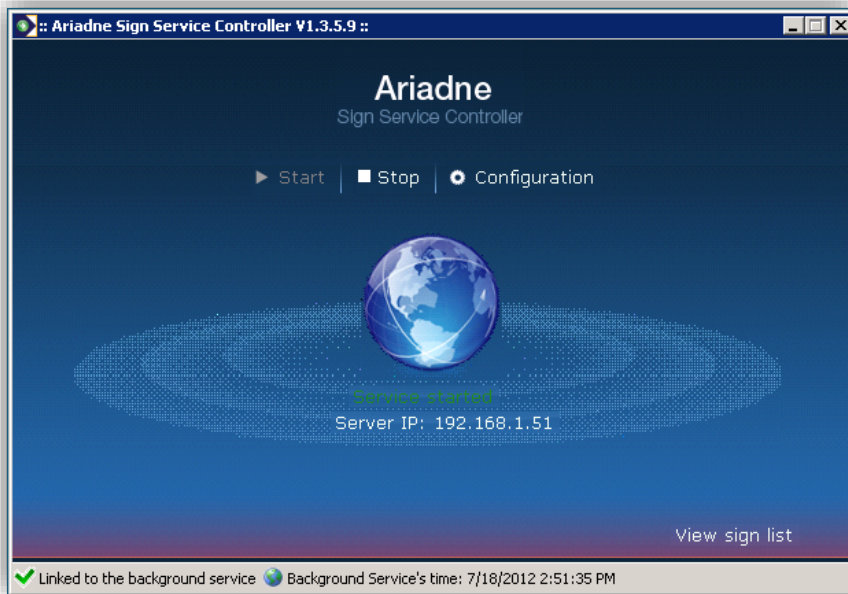


Figure 9. Ariadne Sign Service Controller

Configuration: is server information including Server IP Address, Data Folder Path and Logging Settings.

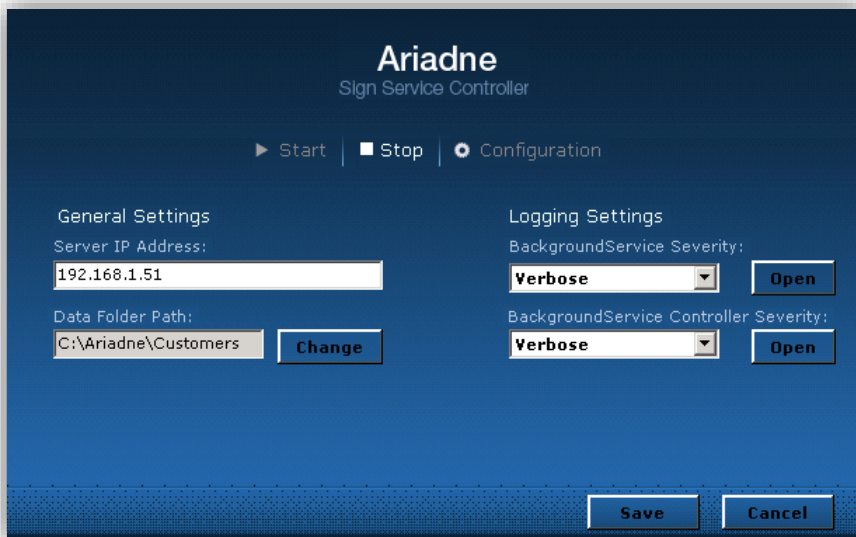


Figure 10. Ariadne Sign Service Configuration

To update or save Ariadne Sign Service configuration, click **[Save]** button. Restart the service to apply new configuration is required.

To exit the configuration screen, click **[Cancel]** button.

Ariadne for Windows

Configure Server address to connect to

Click the "Ariadne" application icon to open the **Server Address** dialog.

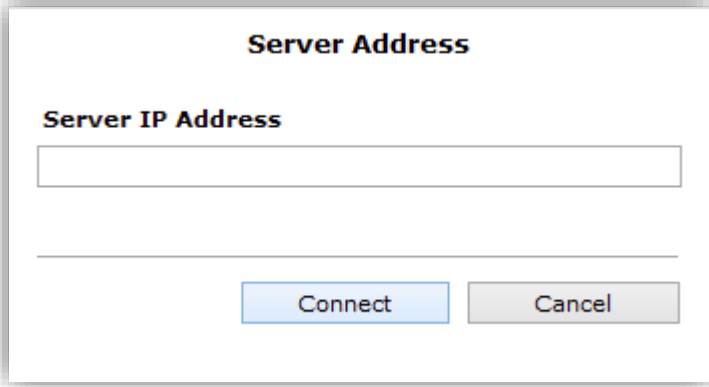


Figure 12. Connecting to Server

Enter IP address of Ariadne Sign Server, and click [**Connect**].

Configure Sign

After connecting to the server, the content of the schedule file is loaded into the screen.

By clicking [**Show hidden icons**] button, you can see the application icon. Right click on the icon, a menu appears as shown in the adjacent figure:

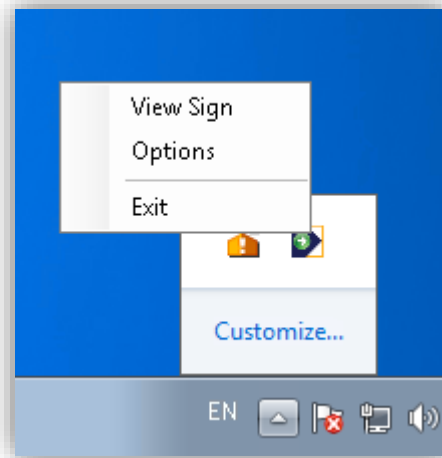


Figure 13. Log in screen view

Option button	Description
View Sign	View the screen with the displayed content
Options	Open the Configuration dialog
Exit	Quit the application

Configuration dialog

The Configuration dialog is opened by selecting [**Options**] from the menu. This dialog consists of 3 tabs: **Status**, **Configuration** and **Options**.

Status tab

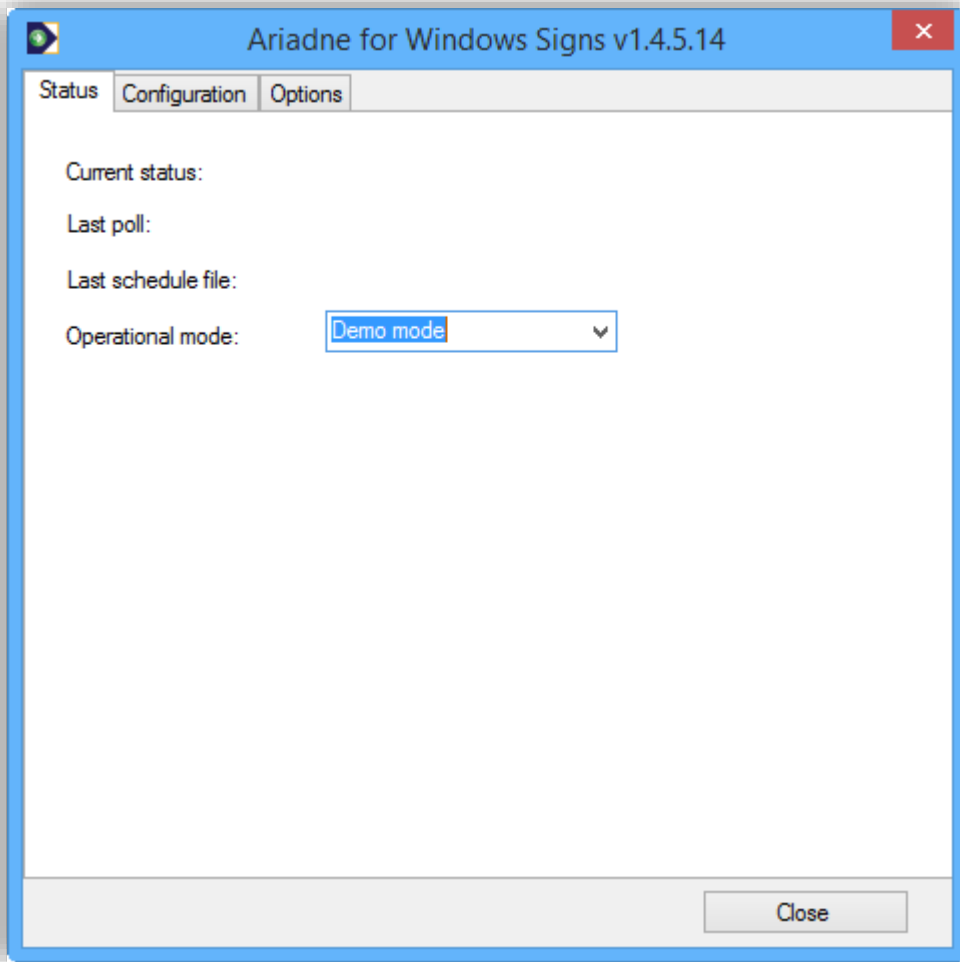


Figure 14. Configuration dialog – Status tab

In this tab, information of application status is displayed:

Label	Description
Current Status	Status of the application at present. It is either <i>Connected to the Server</i> or <i>Disconnected to the Server</i>
Last poll	The most recent time at which client polls the server side.
Last schedule file	The most recent time at which the schedule file is uploaded
Operational mode	Select operation mode: Demo, Production or Test

There are 3 operational modes for you to select.

Demo mode

This mode is default after installation of the product.

If you select this mode, you can only view a demonstration on how the program functions by selecting a sign in **Configuration** tab:

The screenshot shows a software interface with three tabs: 'Status', 'Configuration', and 'Options'. The 'Configuration' tab is active. It contains several input fields and buttons. A red rectangular box highlights the 'Sign's name' field, which contains the text 'AOD-Modulex Sign' and a dropdown arrow, along with a 'View' button to its right. Other fields include 'Server:', 'Username:', 'Password:', 'Customer's name:', 'Customer ID:', 'Resolution:', 'Poll rate:', 'Network card:', and 'MAC address:'. There are also 'Login' and 'Logout' buttons, and 'Search' buttons for the customer fields. At the bottom, there are 'Register Sign' and 'Undo' buttons.

Figure 15. Demo mode – Configuration tab

In **Demo** mode, only Sign's name field is available. And you can click [**View**] to see how the screen is displayed.

Production mode

This mode is used for most of the customers who already bought the product.

If this mode is selected, you can fill in account details and select [**Register Sign**].

Out of 3 operational modes, this mode allows you to fill in the most data fields in **Configuration** tab.

Test mode

This mode allows you to fill in your account details and select a specific sign to view or do some testing.

It is very useful to select this mode in such cases as super admin is requested to support a customer with an issue in a specific sign or a potential customer wants to test some features before purchasing the product.

Server: 192.168.1.91

Username: admin

Password: *****

Login Logout

Customer's name: Rica Hotel Bergen Search

Customer ID: 2292 Search

Sign's name: 103's PC View

Resolution: [] [] Pixels

Poll rate: [] Seconds

Network card: []

MAC address: []

Register Sign Undo

Figure 16. Test mode – Configuration tab

Configuration tab

Number of available data fields in **Configuration** tab depends on selection of operation mode in **Status** tab.

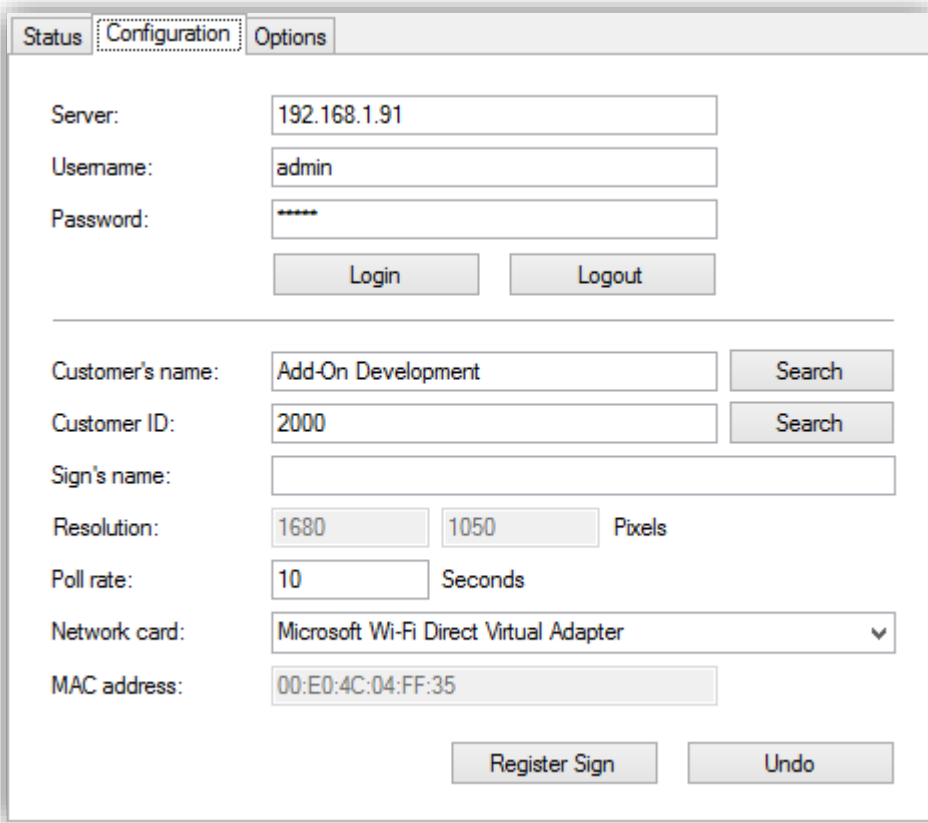


Figure 17. Configuration dialog – Configuration tab

This tab display configuration details for the sign, based on which the sign can be registered.

Field	Description
Server	Server address to which the application is connected.
Username & Password	Username and password to log in to the server.
Customer's name	Name of the customer. Click [Search] to select one.
Customer ID	ID of the customer. Click [Search] to select one.
Sign's name	Name of the sign based on your preferences.
Resolution	Resolution of the sign. This is not configurable.
Poll rate	The time interval based on which content of schedule file will be retrieved.
Network card	Network card
MAC address	MAC address of the sign

After making necessary configuration, you can click [**Register Sign**].

Options tab

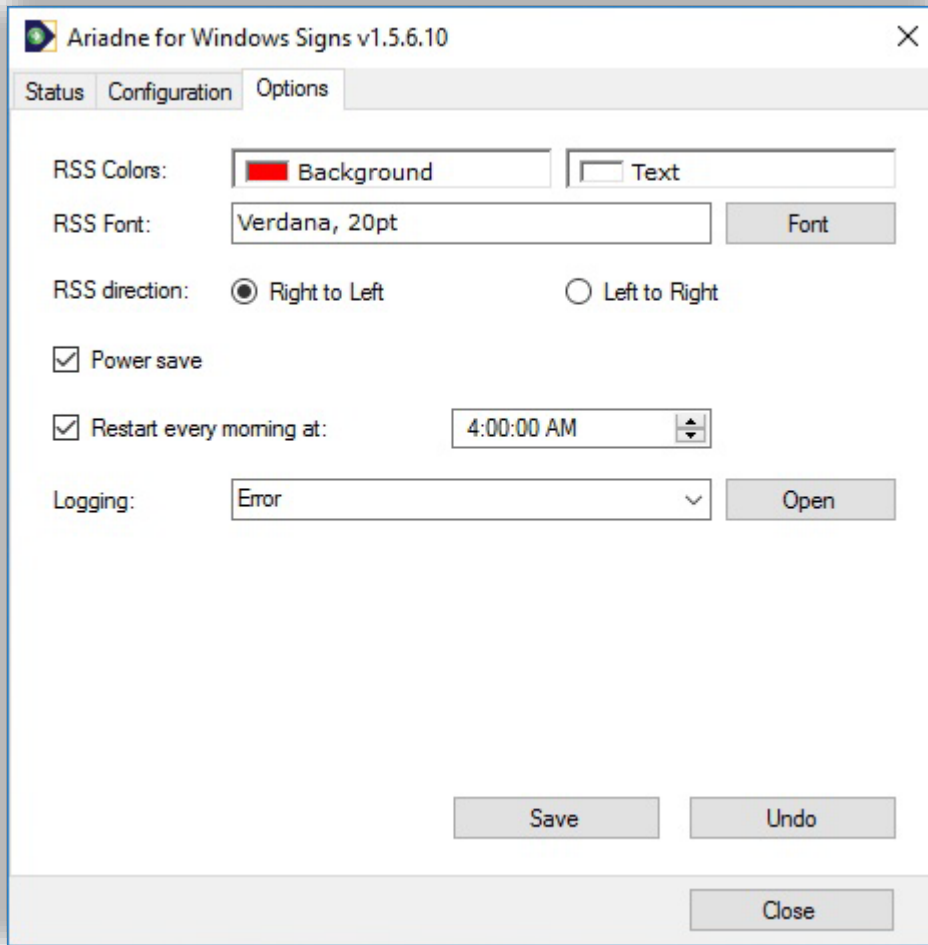


Figure 18. Configuration dialog – Configuration tab

In this tab, you can make some additional configurations to the sign.

Field	Description
RSS Colors	Color of RSS message which can be booked by Ariadne3. Double click on the corresponding colored rectangle to select color for Background and Text.
RSS Font	Font of RSS message which can be booked by Ariadne3.
RSS direction	Moving direction of RSS message (It can move from Right to Left or vice versa).
Power save	Check this option so that the sign can be configured to sleep when there is no content to display on the screen.
Restart every morning at	Select this option and time to restart the sign.
Logging	Select logging level from the drop-down list. Click [Open] button to go to the logging folder (<i>C:\ProgramData\Add-On Products\Ariadne for Windows\Logging\AriadneforWindows</i>).

Click [Save] to finish.

CHAPTER 3.

Questions and Answers

Q: How can I get rid of the mouse on my PC sign?

A: Sometimes it is not convenient as the PC sign is a full screen splash and you do not know how to catch the mouse. You can get your mouse again by touching, moving the mouse or right click on PC sign, click **Hide** or **Normal** or **Full screen** up to your action.

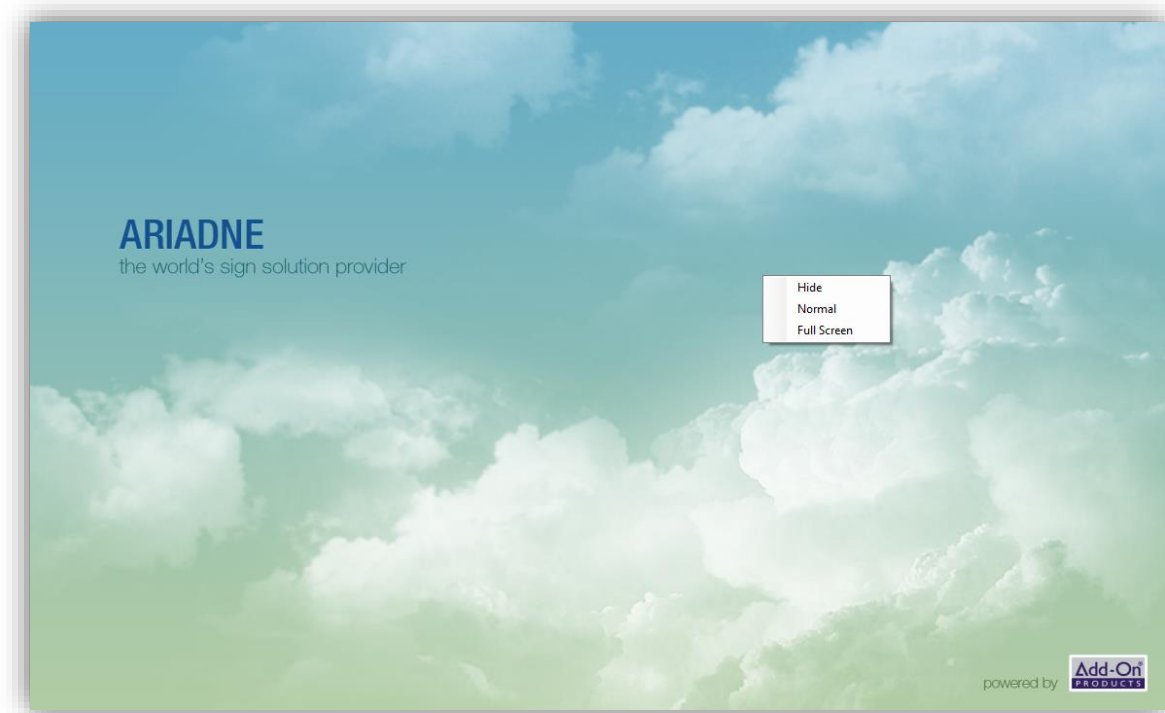


Figure 19. Ariadne home screen

One another effect way is pressing **Home** key from the keyboard, it may help you to see the toolbar.

Q: How can I setup my PC, so it will work as sign after power down?

A: The Ariadne for Windows is installed and configured in the start-up by default. It means whenever the PC is started, Ariadne for Windows will open automatically.

But if because of some reason, the Ariadne For Windows in your PC is not opened automatically, you can start it manually with these simple steps:

Click **Start** → **Run** from the taskbar. Type **regedit** and click **[OK]** to open Registry Editor

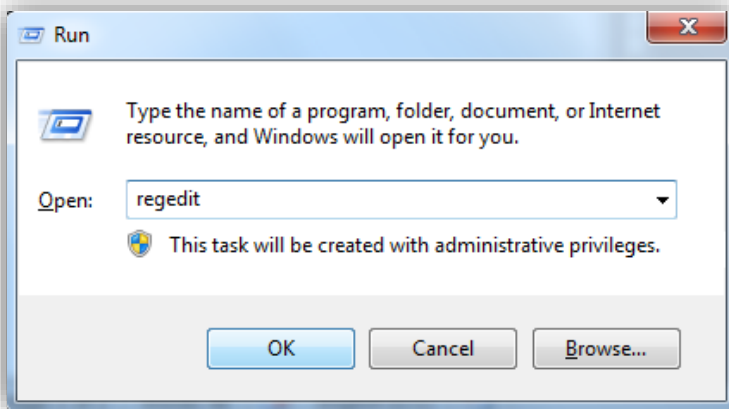


Figure 20. Run window

Access **HKEY_CURRENT_USERS** → **Software** → **Microsoft** → **Windows** → **CurrentVersion** → **Run**
Right click at the right panel and click **New** → **String Value**

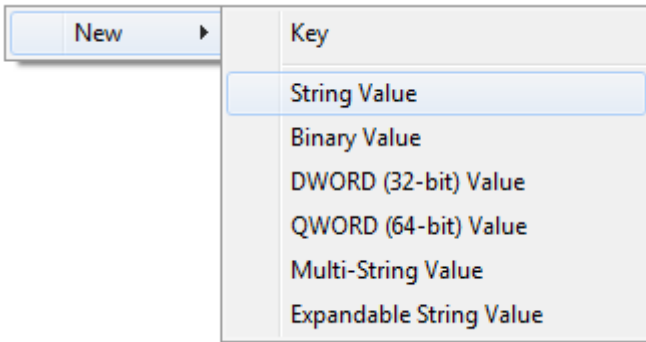


Figure 21. New String Value

Enter the name you want, for example, *AriadneForWindows*

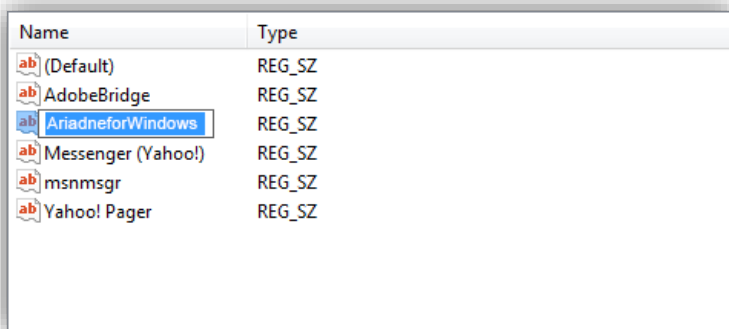


Figure 22. New string value

Right click on the name which has just been created, select **[Modify...]**, an pop up should appear. Fill the path of *AriadneForWindows* to the **Value data box** and click **[OK]** button.

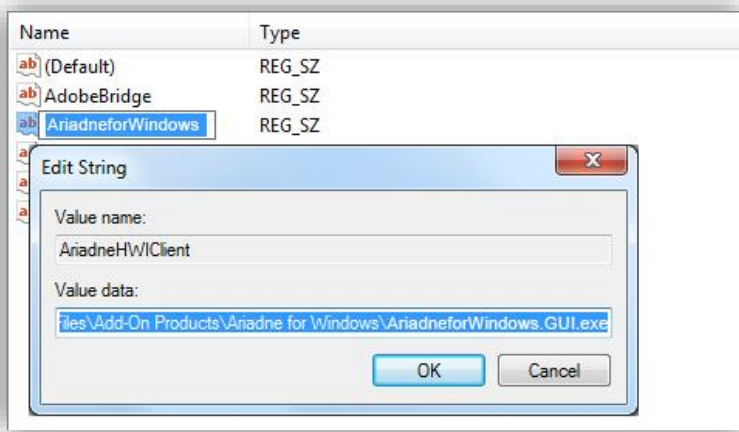
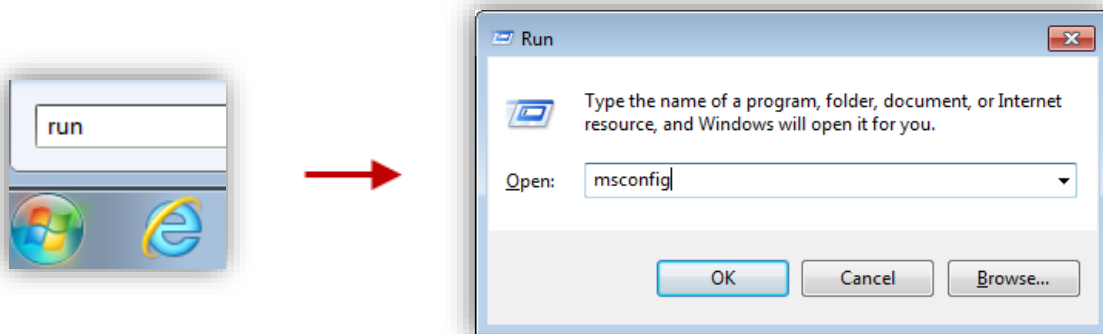


Figure 23. Enter value data

Q: How can I ignore the Ariadne for Windows’s automatically start-up?

A: You can configure Ariadne for Windows in order not to start automatically each time you start you PC by some simple actions:

Click **Start** → **Run**, type *msconfig* and click **OK**.



In **System Configuration**, select [**Startup**] tab.

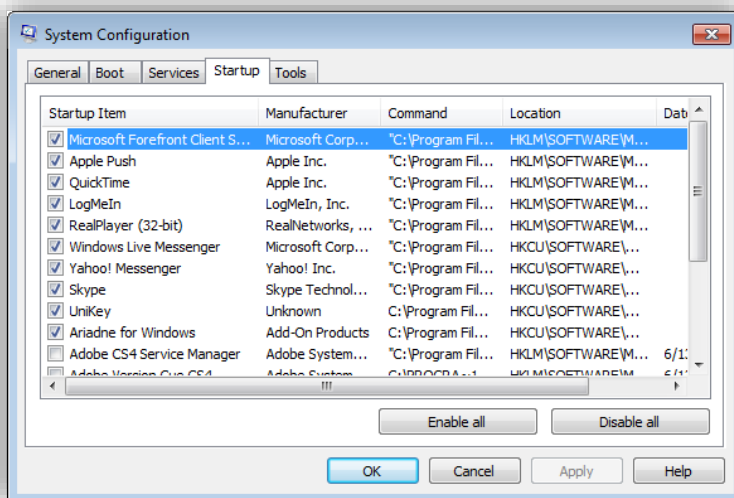


Figure 24. System Configuration

Then uncheck in the *Ariadne for windows.GUI* box. Click **[OK]** button. This will be affected when you restart the PC.

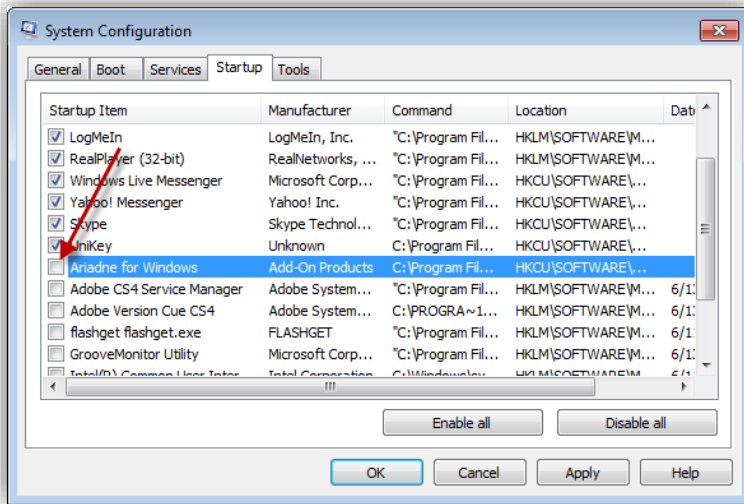


Figure 25. Uncheck the Ariadne for windows box

Q: How can I change the default splash screen of Ariadne for Windows Sign?

A: You can copy the image and paste into *[Ariadne for Windows installation folder]\Add-On Products\Ariadne For Windows\Data\BackgroundForSign*. The customized image will display as the default splash.