



Add-On Products

# Resource Central

---

## COM Add-in 4.0 Installation Guide

**Version: 1.11**

Add-On Products  
Roms Hule 8 – 7100 Vejle – Denmark  
Phone: +45 7944 7000 Fax: +45 7944 7001

Mail: [info@add-on.com](mailto:info@add-on.com)  
Internet: [www.add-on.com](http://www.add-on.com)



No parts of this publication may be reproduced in any form or by any means or used to make any derivative such as translation, transformation, or adaptation without the permission from Add-On Products.



# Table of contents

---

Table of contents .....	2
Manual Installation.....	3
Requirements .....	3
Step-by-step installation of RC COM Add-in.....	3
Configure the Server & Application Name values for RC COM Add-in.....	6
Mechanics of settings.xml file .....	9
Location of settings file .....	9
Content of settings file.....	9
RC Add-in Logging .....	12
Mass deployment.....	13
Predefine add-in configuration properties .....	13
Appendix.....	14
Appendix 1: Use of DisableIEBrowser property .....	14

# Manual Installation

**NOTE:** If you are running a Resource Central backend version older than HF7 (v3.8.0006.0002) and cannot update), please contact Add-on Products for support on how to retrieve and install the webservice.

## Requirements

Go to [System Requirements](#) page in Add-On Products website to have an overview of System requirements for Resource Central (RC).

## Step-by-step installation of RC COM Add-in

**NOTE:** It is required to perform the manual installation with Local Administrative rights.

**Step 1-** Double click the Add-in installer file (.msi). Welcome dialog of set up wizard will show up as shown below:

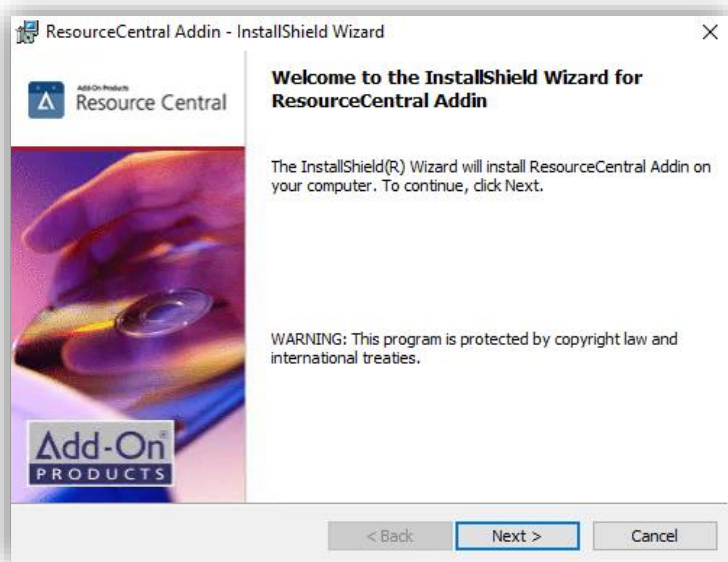


Figure 1. Welcome Screen

**Step 2-** Click 'Next' button. This will display the following screen.

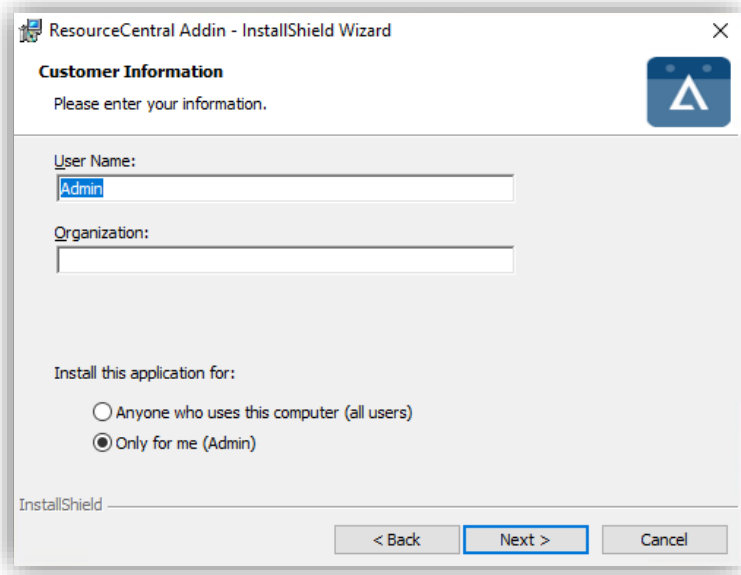


Figure 2. Customer Information

**Step 3-** At this screen, you will have to specify the Availability of the RC COM Add-in.

If you select **'Anyone who uses this computer'**, then whoever logs on to this machine will be able to use the RC COM Add-in application from MS Outlook.

In case, you opt for **'Only for me'**, then only you (the person who is carrying out the installation) will be allowed to use the RC COM Add-in. If anyone else logs on to this machine, he/she will not be able to use the RC COM Add-in from MS Outlook.

After making the appropriate selection, click **'Next'** to proceed to the next screen

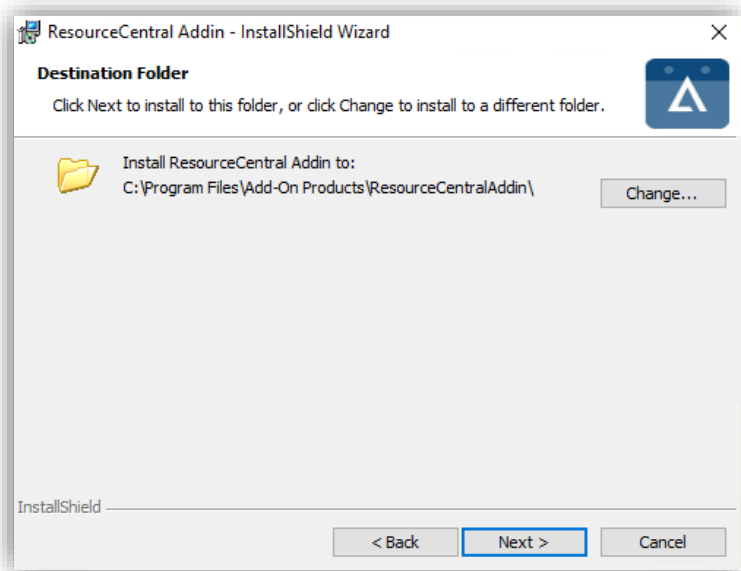


Figure 3. Destination Folder

**Step 4-** At this screen, you will have to specify the Installation Path where you want the RC COM Add-in to be installed.

By default, RC COM Add-in is installed in this folder path: **C:\Program Files\Add-On Products\Resource Central Addin\**

In case you want to install the RC COM Add-in on a customized path, Press 'Change...' button, which will display 'Browse for Folder' dialog as shown below:

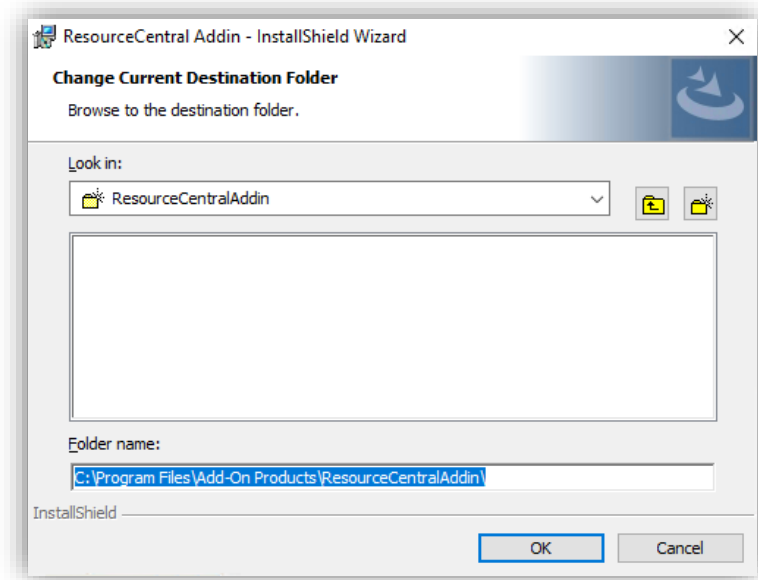


Figure 4. Specify Installation Folder

Select the desired path and press 'OK'

**Step 5-** Click 'Next'. 'Confirm Installation' screen will show up as shown below.

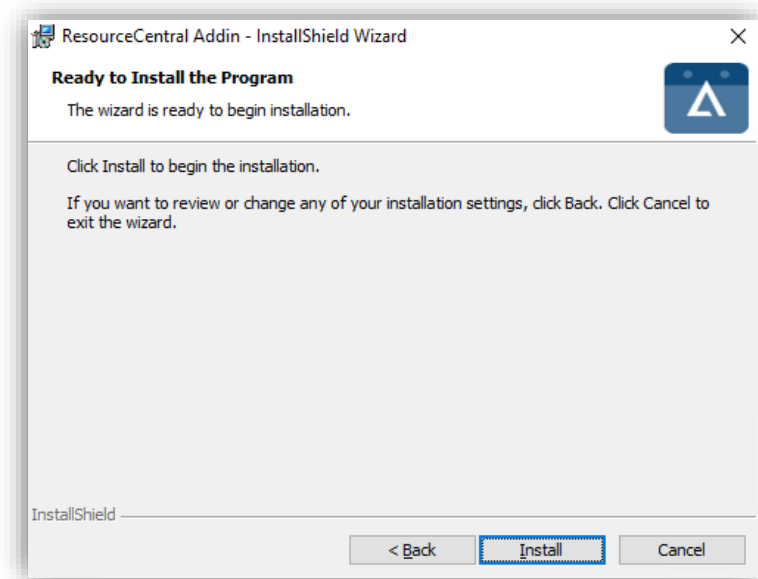


Figure 5. RC Ready to Install

**Step 6-** Click 'Install' to begin the installation of RC COM Add-in. A screen will pop up (shown below) with progress bar mentioning that 'Resource Central Addin is being installed'. Wait for a moment, setup will allow you to proceed further (by enabling 'Finish' button) when progress bar will be traversed completely

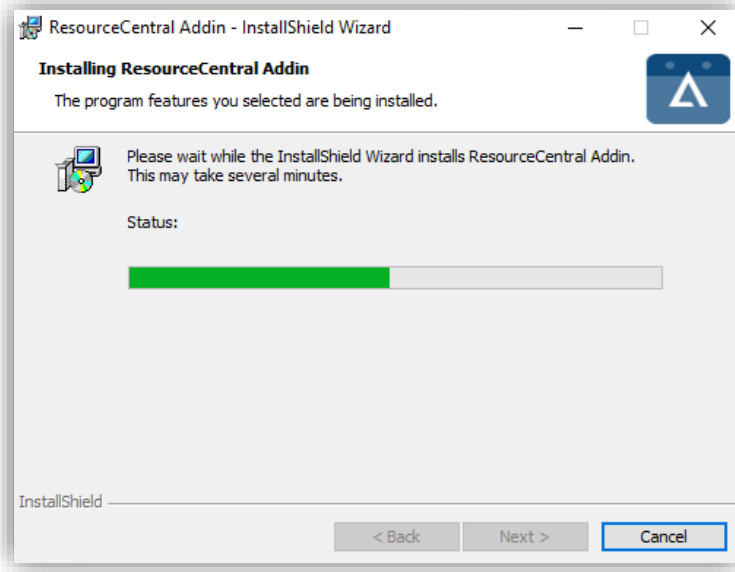


Figure 6. Installation in Progress

**Step 6-** Click 'Finish' to complete the installation. The RC COM Add-in has been installed.

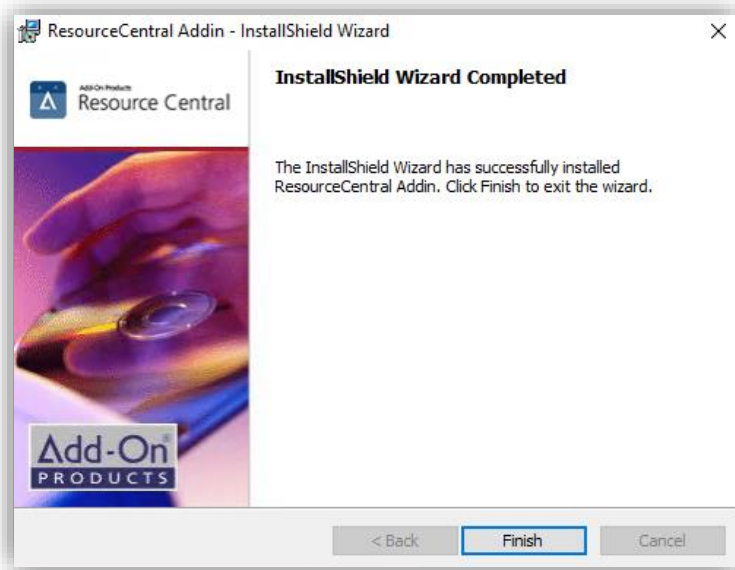


Figure 7. Installation Complete

## Configure the Server & Application Name values for RC COM Add-in

Clicking on My Meetings or Resource Finder button (in new appointment window) for the first time after installation of RC COM Add-in will show the "RC Web Application URL Screen" as shown below:

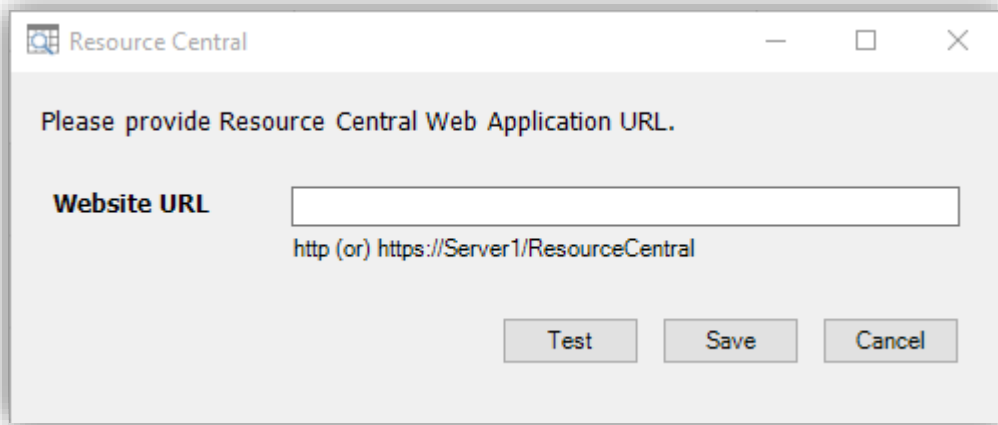


Figure 8. RC COM Add-in Configuration

**NOTE:**

- A. If your Web Application is running under “**https**” header, then before configuring the RC COM Add-in path, it is strongly recommended that you should install the Security Certificate. For details regarding the Security Certificate Installation, please refer to **Appendices → Security Certificate Installation** section in this document.
- B. This URL (either http or https) must be the same as the URL used by the Administrator to establish basic parameter.
- C. Some examples for the “**Website URL**” could be:
  - a. (NetBIOS) → e.g.: - <http://server1/resourceCentral/>
  - b. (FQDN) → e.g.: - <http://server1.contoso.com/resourceCentral/>
  - c. IP address → e.g.: - <http://192.168.10.2/resourceCentral/>

Enter **Website URL** and then click ‘**Test**’ button. If the entered values are correct, the following screen will be displayed:

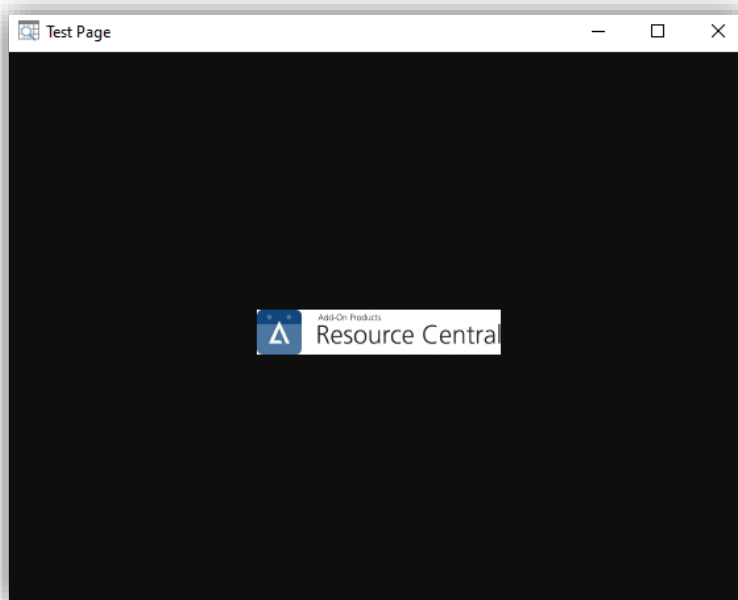


Figure 9. Test screen

Close this Test Page and click on ‘**Save**’ button on ‘**RC Web Application URL Screen**’. This step will save the RC Website URL and the respective ‘**Interface**’ value in that particular client machine’s registry. For details

regarding the actual registry paths, please refer to **Appendices → Registry Paths where RC COM Add-in configurations are saved** in this document.

As the RC COM Add-in Configuration values have been saved, the RC COM Add-in is ready to use.

Now you can access the **Resource Finder** application by clicking on “**ResourceFinder**” button in New Appointment window as shown below:

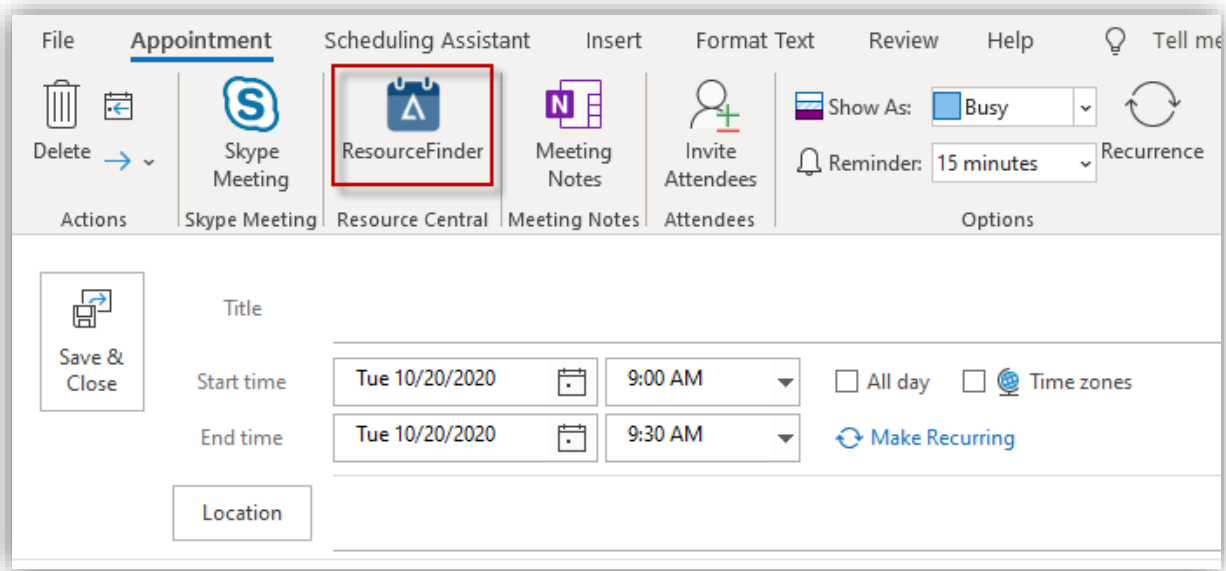


Figure 10. Resource Finder in Outlook



## Mechanics of settings.xml file

In Resource Central, Settings.xml file is used to store Add-in configuration data.

### Location of settings file

Location of settings file is as follows:

- **All users:** C:\ProgramData\Add-On Products\Resource Central\Add-in
- **Only me:** C:\Users\<user's name>\AppData\Local\Add-On Products\Resource Central\Add-in

### Content of settings file

These configurations are stored in the settings file in order that users can make change as they wish:

```
<?xml version="1.0" encoding="utf-8"?>
<AddInConfiguration xmlns:xsd="http://www.w3.org/2001/XMLSchema"
xmlns:xsi="http://www.w3.org/2001/XMLSchema-instance">
  <DisableIEBrowser>0</DisableIEBrowser>
  <ResourceCentralURL />
  <DefaultLocation>-1</DefaultLocation>
  <AvailableResources>0</AvailableResources>
  <NumberOfNoEndDateOccurrences>5</NumberOfNoEndDateOccurrences>
  <RCVersion>3</RCVersion>
  <Language>en-US</Language>
  <UpdateSettings>1</UpdateSettings>
  <LogLevel>1</LogLevel>
  <AttendeeDisplayMode>0</AttendeeDisplayMode>
  <EnableEOWP>1</EnableEOWP>
</AddInConfiguration>
```

Figure 11. Settings file

Property Name	Value	Predefine deployment	Note
DisableIEBrowser	<ul style="list-style-type: none"> <li>• 0 = Use Internet Explorer browser to open an external link in ResourceFinder or My Meeting (default value).</li> <li>• 1 = Use EO browser to open external link.</li> </ul>		Control add-in to use Add-in browser or Internet Explorer to open an external link in the ResourceFinder or My Meeting. See <a href="#">Appendix 1</a> for more details.
ResourceCentralURL	Example: http://RCWebServer/Resource Central	Yes (Refer to <a href="#">KB 208</a> for more details)	URL of Resource Central backend
DefaultLocation	Example: 47 <ul style="list-style-type: none"> <li>• ID of location tree in RC (e.g. ID of root location is 47)</li> <li>• Default = -1</li> </ul>	Yes (Refer to <a href="#">KB 208</a> for more details)	This property is used to set a default location for the first use of ResourceFinder
NumberOfNoEndDate Occurences	Default = 5		Number of occurrences shown in Resource Finder if Organizer books a no-end-date meeting
RCVersion	<ul style="list-style-type: none"> <li>• 0 = Any version higher than RC 3.8 HF6</li> <li>• 1 = RC 3.7 VTC</li> <li>• 2 = RC 3.7.10</li> </ul>	Yes (Refer to <a href="#">KB 208</a> for more details)	Define RC backend compatibility for add-in



	<ul style="list-style-type: none"> <li>• 3 = RC 3.8 RTM and Hotfix 1/2/3/4/5 (<b>This is default value</b>)</li> <li>• 4 = RC 3.8 SR and HF6</li> </ul>	more details)	
Language	<ul style="list-style-type: none"> <li>• en-US = English</li> <li>• zh-CN = Chinese</li> <li>• da = Danish</li> <li>• de = German</li> <li>• nl = Dutch</li> <li>• fi = Finnish</li> <li>• fr = French</li> <li>• it = Italian</li> <li>• ja = Japanese</li> <li>• ko = Korean</li> <li>• nb = Norwegian</li> <li>• pt = Portuguese</li> <li>• ru = Russian</li> <li>• es = Spanish</li> <li>• sv = Swedish</li> </ul>		This property is used to store language after user launches ResourceFinder for the first time (language is read from the user's Outlook language setting).
UpdateSettings	<ul style="list-style-type: none"> <li>• 0: The function is turned OFF. Add-in will not update "ResourceCentralURL" and "RCVersion" in Settings file</li> <li>• 1: The function is turned ON, Add-in sends request to backend web service and updates both "ResourceCentralURL" and "RCVersion" (<b>This is default value</b>)</li> <li>• 2: The function is turned ON, Add-in sends request to backend web service and updates "RCVersion"</li> <li>• 3: The function is turned ON, Add-in sends request to backend web service and updates "ResourceCentralURL"</li> </ul>	Yes (Refer to <a href="#">KB 208</a> for more details)	Control the update settings function in working with back end web service
LogLevel	<ul style="list-style-type: none"> <li>• 1 = Error</li> <li>• 2 = Error + Warning</li> <li>• 3 = Debug</li> </ul>		Control log level of add-in
AttendeeDisplayMode	<ul style="list-style-type: none"> <li>• 0 = Send all attendees to Resource Finder when Resource Finder is opened (This is default value)</li> <li>• 1 = Send attendees to Resource Finder in batch (default 10 attendees at one – Control by parameter <b>OrderForm.Attendees.PageSize</b>)</li> </ul>		Control the way add-in sends attendees list to Resource Finder



EnableEOWP	<ul style="list-style-type: none"><li>• 1 = Use EOWP.EXE to create the child processes of Add-in browser engine <b>(This is default value)</b></li><li>• 0 = Use Windows system file <b>rundll32.exe</b> to create the child processes of Add-in browser engine.</li></ul>		<b>NOTE:</b> This is for testing during new development, and it should not be changed.
------------	--	--	--

# RC Add-in Logging

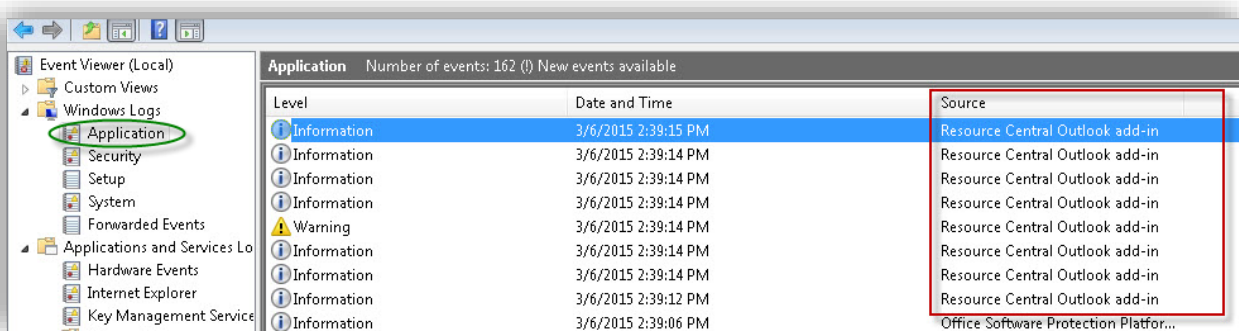
There are two scenarios:

- There has been no Resource Central (RC) add-in installed on the machine, and now RC add-in is installed.
- Older add-in exists on the machine, and now a newer add-in is installed on top of it.

The subsequent content clarifies where Add-in logs are stored in each scenario.

## Scenario 1: Add-in is installed from scratch.

In this situation, add-in logs are archived in “Applications” entry under **Windows Logs** folder.



And this is the only place where RC add-in logs are archived.

## Scenario 2: Add-in is installed on top of older version.

In this situation, the add-in logs of newer version are archived in “Applications” entry under **Windows Logs** folder. But legacy add-in logs (of older version) can still be found in “RC COM Add-in” entry under **Applications and Services Logs** folder.

So in this situation, add-in logs are found in two places:

<b>Newer Add-in</b>	“Applications” entry under <b>Windows Logs</b>
<b>Older Add-in</b>	“RC COM Add-in” entry under <b>Applications and Services Logs</b> folder. Contains legacy logs only.

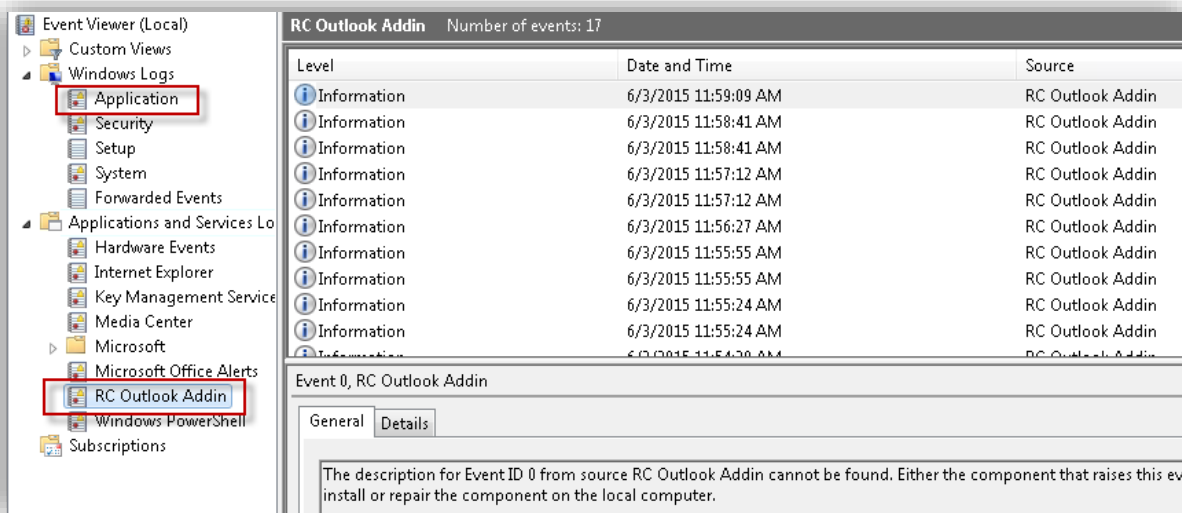


Figure 12. Event viewer

## Mass deployment

Besides the manual deployment, the Add-in can be automatically deployed to multiple users in various ways.

For more details about other forms of Add-in deployment, refer to the following Knowledge Base articles:

- **KB 0208** - How to perform Add-in deployment using command line
- **KB 0209** - How to create a TRANSFORM file
- **KB 0210** - How to perform Add-in mass deployment using Group Policy Object

### Predefine add-in configuration properties

During an automatic deployment the values of the following properties can be defined, if the default values needs to be changed.

E.g. there might be a need to point all users' Add-ins towards the RC backend URL address, so the users do not have to type in the URL address when launching the Add-in for the first time.

Property Name	Value	Note
RESOURCECENTRAL_URL	Example: http://RCWebServer/ResourceCentral	URL address of Resource Central backend
RC_WEB_VERSION	<ul style="list-style-type: none"> <li>• 0 = Any version higher RC 3.8 HF6</li> <li>• 1 = RC 3.7 VTC</li> <li>• 2 = RC 3.7.10</li> <li>• 3 = RC 3.8 RTM and Hotfix 1/2/3/4/5 <b>(This is default value)</b></li> <li>• 4 = RC 3.8 SR and HF6</li> </ul>	Define RC backend compatibility for add-in
ALLUSERS	1	Use this property with value "1" if Add-in is deployed for All users (per machine)
DEFAULT_LOCATION	ID of location tree in RC (e.g. ID of root location is 47) Refer to <b>KB 0225 - How to retrieve location ID in Resource Central backend</b> for more details	This property is used to set a default location for the first use of ResourceFinder
UPDATE_SETTINGS	<ul style="list-style-type: none"> <li>• 0: The function is turned OFF. Add-in will not update "ResourceCentralURL" and "RCVersion" in Settings file</li> <li>• 1: The function is turned ON, Add-in sends request to backend web service and updates both "ResourceCentralURL" and "RCVersion" <b>(This is default value)</b></li> <li>• 2: The function is turned ON, Add-in sends request to backend web service and updates "RCVersion"</li> <li>• 3: The function is turned ON, Add-in sends request to backend web service and updates "ResourceCentralURL"</li> </ul>	Control the update settings function in working with back end web service

# Appendix

## Appendix 1: Use of DisableIEBrowser property

By default, RC add-in uses IE browser (DisableIEBrowser = 0) to open a link in the ResourceFinder or My Meeting, RC html order form could contain a link to external service over the internet, the service link sometimes requires running in IE browser. By setting DisableIEBrowser = 1, add-in uses EO browser to open the link in a popup windows instead of IE browser.

